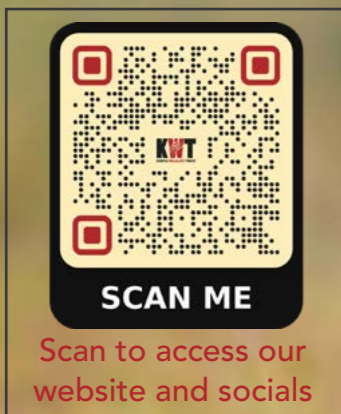


ANNUAL REPORT | 2025

KWT
KENYA WILDLIFE TRUST



A Note from the Chair 3
 Letter from Ag. Executive Director 4
 Our Focus 6
 Our Strategic Priorities 7
 Predators 10
 People 58
 Ufugaji Hifadhi Program 66
 Partnerships 68
 Stakeholder Engagement 76
 KWT Team 82
 How to support KWT 84
 Institutional Partners and Supporters in 2025..... 86



Cover Photo: Felix Studios-Disney-LRF

Design & Layout: Felixie Kipng’etich

Lead Contributors: Dominic Sakat, Felixie Kipng’etich, Gloria Kosgey, James Kasaine, Kasaine Sankan, Luke Toroitich, Michael Kaelo, & Niels Mogensen.

Additional content: Billy Kaitet, Brian Schuh, Calvin Naurori & Jacob Soit.

Printed in June 2026 by **Kenya Wildlife Trust**, Nairobi Kenya.

www.kenyawildlifetrust.org
www.marapredatorconservation.org

A Note from the Chair

Dear Friends of KWT,

Conservation does not move in straight lines. It moves the way the landscapes we protect do - season by season, shaped by forces that are sometimes within our control and often not. What we can control is how we respond. That is the story of 2025 for the Kenya Wildlife Trust.

Through our flagship Mara Predator Conservation Programme (MPCP) in the Greater Mara Ecosystem, this was a year that tested us. The poisoning incidents were a reminder of how quickly years of trust-building can be undone - and how much depends on the speed and quality of our response. When our teams, working alongside the Kenya Wildlife Service, **treated and released six lions back into Oloisukut Conservancy**, that outcome was not accidental. It was the direct result of relationships built over years, infrastructure funded by people like you, and a team that showed up when it mattered most.

The fragility of our cheetah population weighs on me. Cheetahs are a bellwether species - their vulnerability reflects wider ecosystem pressures that no single intervention will resolve. What gives me confidence is that KWT is no longer simply monitoring that vulnerability. We are translating long-term data into practical, community-grounded solutions: bomas built from recycled materials, smart geofencing, and a **Ufugaji Hifadhi programme that protected over 122,000 livestock from disease** last year. These are not parallel programmes. They are the same programme. You cannot protect predators without securing the livelihoods of the people who live alongside them.

I want to acknowledge a milestone that matters to me personally. Our **Conservation Leadership Programme supported 24 young Kenyans** the largest cohort in KWT’s history. Conservation science without conservation leadership is a short-term investment. When I watch our Lion Ambassadors at work in the field, bridging the distance between predator

behaviour and community reality, I see the institution we are becoming, not just the one we are today.

In June, I had the privilege of hosting Nick Lapham at the Tony Lapham Predator Hub. It was a visit that reminded me why this work demands our best - seeing real-time collar data, meeting the teams, standing in a landscape that remains extraordinary because people have chosen to protect it. We are grateful for his continued partnership and for what his father’s legacy has meant to predator conservation in the Mara.

In November, I represented KWT in the United Kingdom, where I saw firsthand how global audiences are engaging with conservation stories from East Africa - not as distant charity, but as shared planetary stakes. Partnerships like the one with Kericho Gold, which carries predator conservation messaging directly to Kenyan households and beyond, reflect an understanding that conservation communication is as important as conservation science.

Looking ahead, I am clear-eyed about the challenges. Land pressures are intensifying. Climate variability is reshaping migratory patterns. The communities of the Greater Mara are navigating economic realities that do not pause for conservation timelines. KWT’s response to all of this must be grounded, credible, and built on genuine partnership - with the Kenya Wildlife Service, the Narok County Government, the Wildlife Research and Training Institute, and most importantly, with the communities whose consent and commitment make everything else possible.

To our donors, partners, and the communities of the Mara: thank you for your trust. The pages that follow are a record of what we have done together. I hope they give you reason to stay with us for what comes next.

Warm regards,
Arnolda Shiundu,
 Board Chair.

Letter from Ag. Executive Director

Stepping into the role of Acting Executive Director during a period of transition was both an honour and a responsibility. My primary goal was to ensure that, while our leadership evolved, our commitment to the communities and wildlife of the Greater Maasai Mara remained as steadfast as ever.

Looking back on the past year, I am proud to say that we did far more than simply maintain our course; we witnessed a strengthening of community-led stewardship across the landscape.

We have always believed that conservation cannot be mandated from the top down - it must be led by the people who share the landscape with apex predators. In 2025, through our herder training programmes across conservancies such as Naboisho and Olare Orok, we saw herders embracing their roles as conservationists.

We heard testimonies from community elders who recognise that sustainable coexistence requires collective responsibility through the construction of strong livestock enclosures and the practice of proper herding, rather than reliance on compensation alone. When a herder tells us that our training serves as a 'wake-up call' to protect their natural heritage, we know our strategy is making a meaningful impact.

This investment in people extended across all our programmes. We were proud to support **21 scholars** through our Conservation Leadership Programme (CLP) as they undertook internships with various organisations. We also reached new milestones in promoting holistic ecosystem health by vaccinating more than **2,300 domestic dogs and cats against rabies**. Meanwhile, our Lion Ambassadors continued to utilise EarthRanger technology to intercept predators and de-escalate human-wildlife conflict.

Our commitment to evidence-based conservation also continued to grow throughout the year. In 2025, KWT contributed to the global body of conservation knowledge through the publication of four scientific papers, highlighting the importance of rigorous research in informing conservation policy and practice. These publications not only advance our understanding of predator ecology and human-wildlife coexistence but also ensure that lessons from the Greater Maasai Mara contribute to conservation efforts far beyond our landscape.

Recognising the importance of sharing conservation stories with a wider audience, we also launched **Predator Watch**, a weekly newsletter that provides insights into the lives and movements of the predators we monitor. Through regular updates, photographs, and field observations, the series has become an important platform for connecting supporters, partners, and communities to the day-to-day realities of predator conservation and the individuals working tirelessly to protect these species.

KWT also continued to play an active role in national and regional conservation dialogues. Our team was represented at numerous conferences, seminars, and workshops, including the **National Recovery and Conservation Action Plan for the Cheetah and Wild Dog in Kenya (2025–2034)** workshop, the **2025 KWS Carnivore Conference**, and the **Kenya–Tanzania Borderland Carnivore Coalition** Workshop. These engagements provided valuable opportunities to share lessons learned from the Mara, contribute technical expertise, strengthen partnerships, and help shape the future of carnivore conservation across the region.

In addition, KWT participated in the **National Wildlife Census** conducted between June 2024 and August 2025. This landmark exercise brought together multiple stakeholders to generate critical data on wildlife populations across Kenya. By contributing our expertise, field knowledge, and personnel, we supported efforts to strengthen the evidence base needed for informed wildlife management and conservation planning at a national scale.

The alarming decline in the Mara's cheetah population presented a challenge that demanded urgent action. We therefore took steps to bring together stakeholders from across the landscape in order to strengthen our monitoring and rapid-response protocols. These collaborative efforts serve as a reminder that reversing the decline of predators requires a united coalition.

As we close the chapter on 2025, I would like to extend my heartfelt gratitude to the KWT staff who work tirelessly across the landscape, thank you for your dedication, resilience, and commitment.

I would also like to sincerely thank our partners, donors, and Board of Trustees for your continued trust, support, and shared vision. Your contributions make this work possible, and together we are building a future where communities and wildlife can thrive side by side.

With gratitude,
Gloria Achieng (CPA),
AG. Executive Director.

OUR FOCUS

PREDATORS

KWT's vision is a Kenya where healthy predator populations are the cornerstone of thriving ecosystems. To achieve this, we run the Mara Predator Conservation Programme in the Greater Mara Ecosystem



PEOPLE

Our predator conservation work is strongly anchored in collaborating with communities living alongside wildlife. KWT works with and empowers local communities and educates all stakeholders about conservation and environmental stewardship.



PARTNERSHIPS

KWT believes that a target driven and collective approach will lead to much more effective work in the country's core ecosystems. To achieve this, we form strategic partnerships with like-minded individuals and organisations working together for collective impact.



OUR STRATEGIC PRIORITIES

Mara Predator Conservation Programme

The Mara Predator Conservation Programme (MPCP) is KWT's flagship programme whose vision is to become a world-class conservation programme providing evidence-based, practical conservation management recommendations, solutions and ideas developed through robust research and monitoring practices complemented by genuine community engagement.

'Ufugaji Hifadhi' Programme

The Livelihoods programme, 'Ufugaji Hifadhi,' seeks to provide farmers with equitable wages and a sustainable income by promoting the production and sale of healthy livestock and livestock products. It also encourages them to adopt sound pasture management practices and participate in restoring degraded landscapes within the Greater Mara Ecosystem.

The programme targets to ensure women and youth are mainstreamed and benefit in the livestock economy and entrepreneurship through capacity building. Through this, the farmers become more resilient to the adverse effects of changing weather patterns and less likely to resort to harmful measures that jeopardize wildlife and the land's protection.

Conservation Leadership Programme

KWT's Conservation Leaders' Programme ensures that the unique knowledge of young people in Greater Mara, Laikipia/Samburu and Tsavo/ Amboseli Ecosystems is enhanced by a quality higher education diploma.

The Conservation Leadership Programme offers full funding for students to pursue wildlife conservation studies at the Wildlife Research and Training Institute.

The programme works with local schools and non-profit organisations to select gifted students, with leadership potential, who would otherwise not have the chance to pursue a quality education.

Grassroots Grant Making

KWT's data-driven approach is complemented by grant making to strengthen grassroots organisations, many of whom know about the realities of these ecosystems than anyone. KWT believes in the capacity of trusted local organisations to drive change.

Our grant making portfolio includes organisations focusing on protection of predators, as well as community health and education projects.



Throughout the year, a total area of **~3,000 km²**, was covered across the Greater Mara Ecosystem.



146,816 cattle **54,371** sheep vaccinated against Contagious Bovine Pleuropneumonia (CBBP) and Bluetongue respectively.

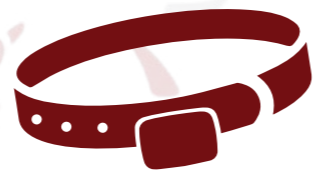


We recorded a total of **485** lion sightings and **107** cheetah sightings.

2025 IMPACT AT A GLANCE



24 scholarship recipients through our Conservation Leadership Programme.



2 lion collars and **1** cheetah collar deployed
8 collared predators monitored across the study area



Predator Proof Bomas (Livestock Enclosures)

5 Recycled Predator Proof Bomas (RPPBS) constructed
92 RPPBS Assessed by Lion Ambassadors.



NONE OF THIS WOULD HAVE BEEN POSSIBLE WITHOUT SUPPORT FROM THE KENYA WILDLIFE TRUST, THEY INVESTED IN ME AND BELIEVED IN ME EVERY STEP OF THIS JOURNEY.

I AM INCREDIBLY GRATEFUL TO THE WHOLE TEAM FOR HELPING EMPOWER LOCAL STUDENTS LIKE ME TO ACHIEVE THEIR DREAMS.

BRIAN LESHAN KAELO, CONSERVATION LEADERSHIP PROGRAMME (CLP) ALUMNUS.



PREDATORS

KWT'S VISION IS A KENYA WHERE PREDATOR POPULATIONS ARE A CORNERSTONE TO THRIVING ECOSYSTEMS.

Mara Predator Conservation Programme (MPCP)

Objective:

The overall goal of MPCP is to **support stable, healthy predator populations in the Greater Mara Ecosystem** by providing scientific evidence for conservation action. It does this through research and community engagements aimed at creating tolerance and coexistence. The programme is strongly guided by Kenya Wildlife Trust's value proposition of being **driven by science and focused on people**.



Community Outreach

Activities reached more than **19,894 people** across over **3,000 households**.



Conflict Mitigation

7 Anti-poison campaigns in markets, **9** Barazas and **1** Conflict Resolution meeting held



Geofence breaks

Response to alerts geofence breaks: **4,042 geofence breaks alerts**.



Intensive Monitoring

Annual cheetah and lion **survey completed** across 16 Mara Conservancies, the Mara Triangle, and the National Reserve.



Herder Training

403 herders trained on proper herding practices topics



Conservation Education

5 conservation education outreaches conducted, where **200 community members** reached

SCIENCE-DRIVEN CONSERVATION OF PREDATORS

The Mara Predator Conservation Programme (MPCP), a flagship initiative of the Kenya Wildlife Trust, continues to advance its mission of securing viable predator populations in the Greater Mara Ecosystem through integrated research and community engagement.

In 2025, MPCP recorded significant progress in predator monitoring and conservation science. An intensive three-month survey covering 9,206 km documented 316 lions and 63 cheetahs, contributing critical data to national population assessments. Through the collaring programme, five lions and one cheetah were actively monitored, generating real-time insights into movement patterns, ecology, and early warning systems for conflict mitigation.

The programme also responded rapidly to emerging threats, including a poisoning incident in Oloisukut that affected six lions—all of which survived due to timely intervention by MPCP and veterinary partners. Ongoing research into lion coalition dynamics, predator mortalities, and the escalating cheetah conservation crisis continues to inform targeted management strategies. Notably, four scientific publications were produced during the year, reinforcing MPCP's role as a key knowledge leader in the Mara.

Community engagement remains central to MPCP's approach, focusing on reducing human-

wildlife conflict through practical, locally driven solutions. In 2025, 50 herders were trained in improved livestock management practices, 50 predator-resistant bomas were constructed using recycled plastic poles, and lion deterrent lights were deployed in high-risk areas. The Lion Ambassadors programme played a critical role in responding to real-time alerts from collared predators. Conservation education efforts expanded, with 350 new student members participating in experiential learning activities that foster early stewardship. To address wildlife poisoning, MPCP conducted targeted awareness campaigns across seven markets, reaching over 3,300 people, alongside community barazas engaging an additional 800 participants. A perception survey involving 384 community members provided valuable insights to guide future interventions.

MPCP strengthened community and stakeholder engagement through innovative initiatives, including participation in a 50 km ultramarathon to raise funds in support of ranger operations.

Collectively, these efforts underscore MPCP's holistic and adaptive approach to predator conservation - integrating science, community partnership, and proactive conflict mitigation to ensure the long-term coexistence of people and wildlife in the Greater Mara Ecosystem.

WHERE MPCP WORKS

The **Mara Predator Conservation Programme (MPCP)** is based at the **Tony Lapham Predator Hub** in **Olare Motorogi Conservancy**. Positioned opposite Iseketa boma, our base is very near the border with Naboisho Conservancy. As such, we are perfectly located at the interface between wildlife and the surrounding communities.

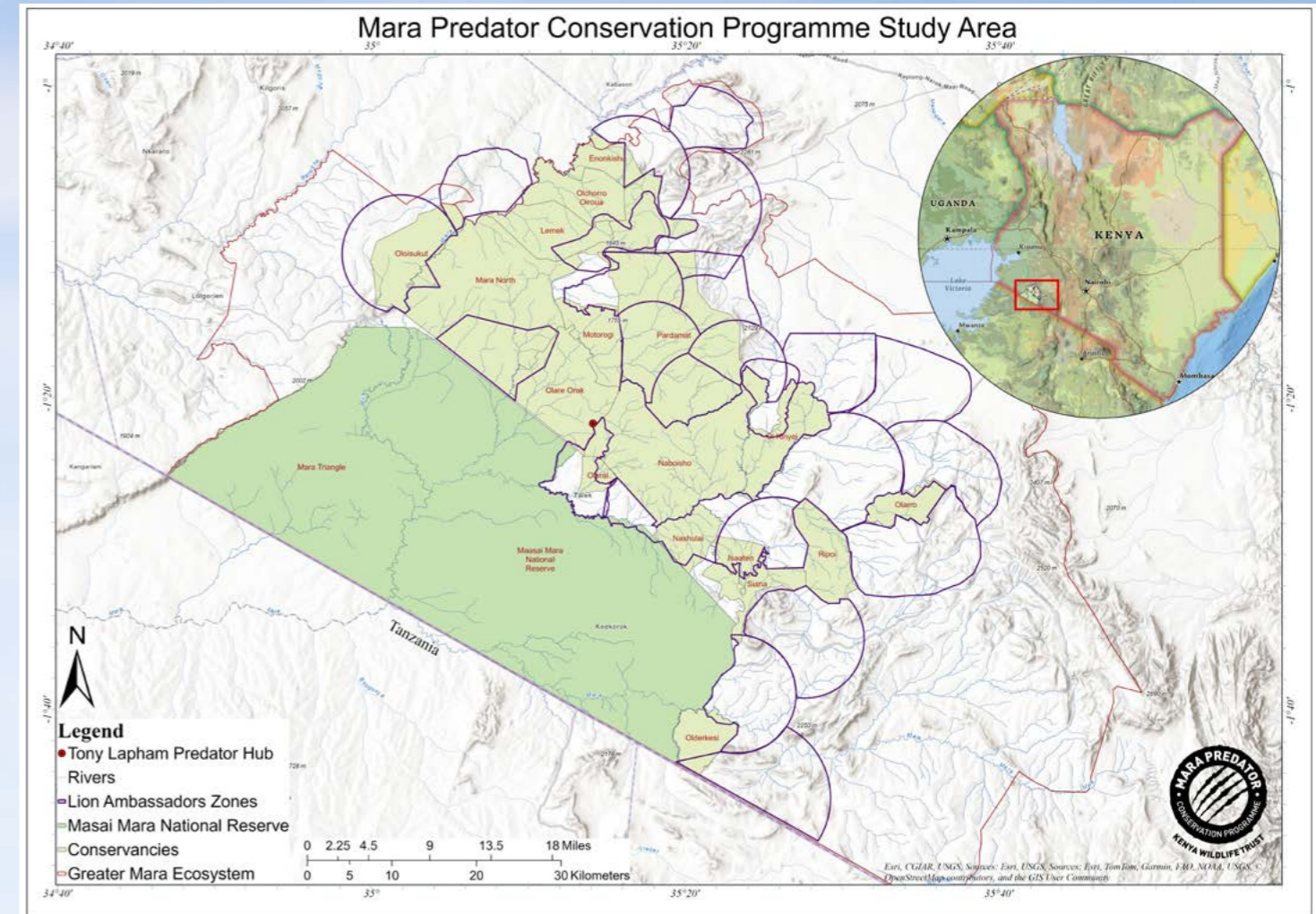
Our study area covers the **Greater Mara Ecosystem (~ 3000 km²)** in the south-western corner of Kenya. We work in both the National Reserve and the surrounding conservancies. To the south, the Maasai Mara borders the Serengeti National Park in Tanzania, to the north and west it borders intensive agricultural land and east of the Maasai Mara is largely pastoralist settlement. The Programme's Community Team works with the communities around the Mara thereby almost doubling the area that the program covers.

“ I REALIZED THE POWER I HAD OVER THE WILDLIFE. METAPHORICALLY, IT WAS THE HUMAN POWER OVER WILDLIFE, WHERE A HUMAN CAN DECIDE IF THIS WILDLIFE STAYS HERE OR NOT.

“ I WAS AFRAID THAT THIS WOULD NOT LAST... AND THAT SUDDENLY GAVE MY PHOTOGRAPHY A PURPOSE. THIS IS A PROJECT YOU STOP EVERYTHING ELSE FOR AND START IMMEDIATELY.”

VENKAT IYER, PHOTOGRAPHER.

STUDY AREA





© Linda Hatfield

RESEARCH UPDATES

As a core objective of the program, we continue to monitor our **~3,000 km²** study area, encompassing sixteen key Mara Conservancies, the Mara Triangle, and the National Reserve.

We also completed our **12th annual Intensive Monitoring Survey (IMS)** between August and October, covering a three-month period. The number of uniquely identified lions and cheetahs recorded during the survey is presented in the tables on page 16.

Data processing for the 2025 IMS, including individual identification, validation, and analysis, is now complete for cheetahs. The lion survey



9,206 km

Distance covered during the three-month Intensive Monitoring Session spanning area ~3,000 km²

316 LION AND 63 CHEETAH SIGHTINGS

results are reported separately in the **Q1 2026 Technical Report**.

In 2025, the Mara Predator Conservation Programme (MPCP) launched **Predator Watch**, a series of regular field updates designed to bring the daily realities of the Greater Mara Ecosystem directly to our global community.

For years, our research and monitoring assistants have monitored the complex, ever-shifting dynamics of the Mara's apex predators. We collect data points from GPS collar coordinates to behavioral observations and identification photographs.

Predator Watch was born from the realization



© Sam Ruby



© Roger Geldard

PREDATOR WATCH IS MORE THAN A WEEKLY BLOG TO ME - IT IS A REFLECTION OF MY PASSION FOR THE BIG CATS OF THE MAASAI MARA AND THE STORIES THAT SHAPE THEIR LIVES.

THROUGH EVERY UPDATE, WE ARE ABLE TO SHARE THE DRAMA, RESILIENCE, AND BEAUTY OF THESE REMARKABLE PREDATORS WHILE DEEPENING MY CONNECTION TO THE LANDSCAPE I LOVE.

JACOB SOIT, RESEARCH ASSISTANT, MPCP



Scan to read more

that behind every data point is a compelling narrative of survival, resilience, and coexistence that the world needs to hear.

Throughout its inaugural year, **Predator Watch** served as a bridge between rigorous scientific monitoring and public education. We offered our supporters a real-time look into the lives of the species we protect by translating complex ecological data into accessible updates. The response to **Predator Watch** in 2025 exceeded our expectations. This regular cadence of updates promoted an invested global community. We connected people to the landscape by sharing the triumphs and tragedies of the Mara's big cats. This connection has driven awareness, increasing respect for responsible tourism, and generating support that keeps our research moving forward.

As we look to the future, Predator Watch will remain a cornerstone of our communications, ensuring that the science we conduct in the field continues to inspire action around the world.

Lion and Cheetah Table

Search effort (km driven)	Lion sightings	Lion detections*	Unique individuals >1 year old	
9206 (9159)	316 (245)	(586) 670	Male	(121) 102
Lions			Female	(205) 232
			Total	(326) 334

Table 1: Summary of lion sightings and numbers during the Aug01-Oct31 2025 survey.

*Lion detections are the total count (including all duplicates) of all lions seen. Numbers from 2024 are in brackets.

Search effort (km driven)	Cheetah sightings	Cheetah detections*	Unique adult individuals		Estimated resident cheetah population
9206 (9159)	63 (42)	68 (45)	Male	12 (9)	9 (8)
Cheetahs			Female	9 (4)	7 (4)
			Total	21 (13)	16 (12)

Table 2: Summary of cheetah sightings and numbers during the Aug01-Oct31 2025 survey.

*Cheetah detections are the total count (including all duplicates) of all cheetahs seen. Numbers from 2024 are in brackets.



Lion and Cheetah Sightings and Effort (Tracks) Driven

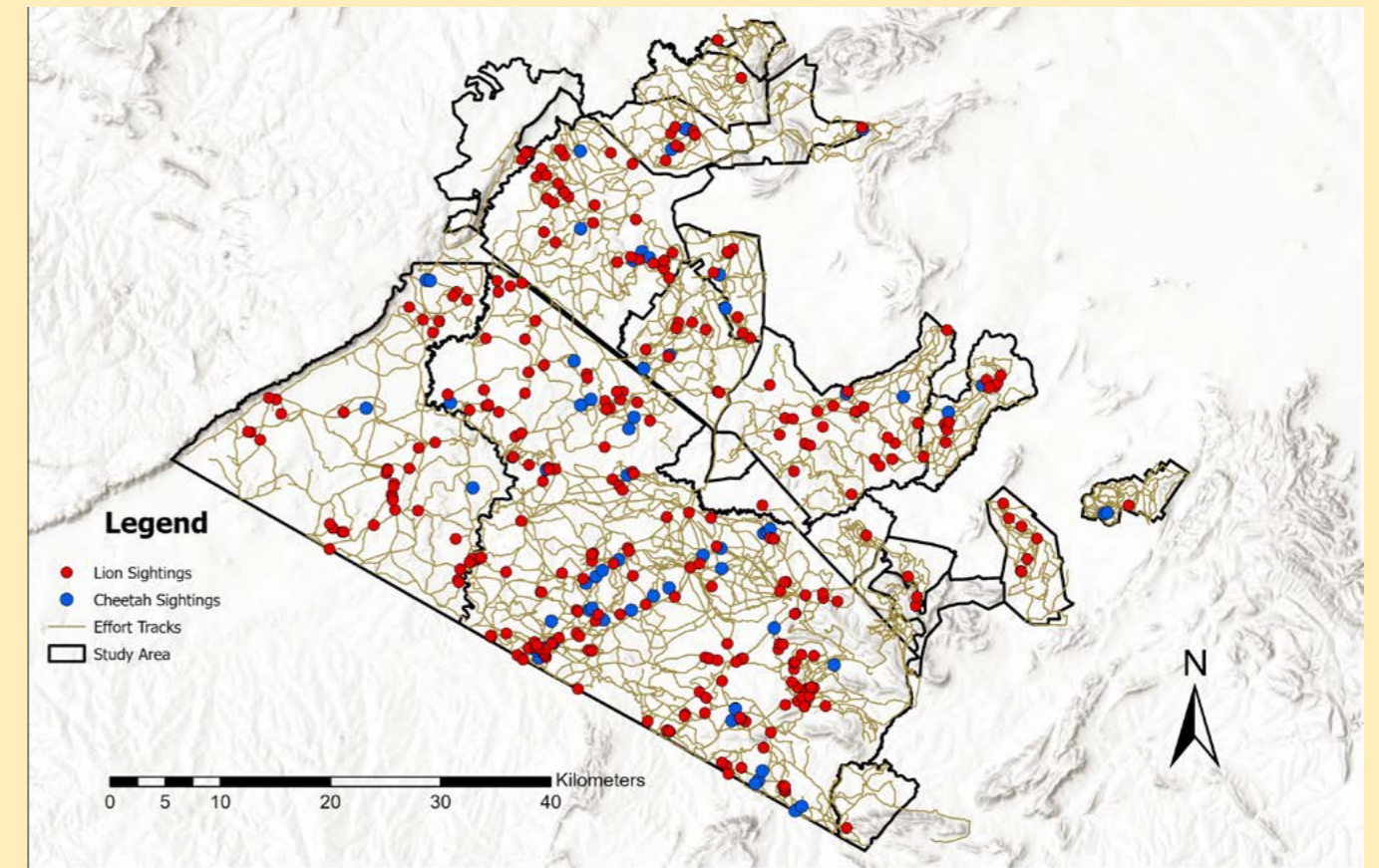


Figure 1: 2025 Lion and Cheetah sightings and effort (tracks) driven.

Collars for Conservation

Three collars deployed, eight collars retrieved

Understanding the key challenges affecting predators in the Greater Mara Ecosystem is achieved through the collaring of selected individuals, particularly lions and cheetahs.

These collars generate critical data on movement dynamics, home ranges and territorial behaviour, habitat use, conflict events and geofence breaches, activity and behavioural patterns, as well as mortality alerts, among other valuable insights.

This collar-derived information is essential for designing targeted human-wildlife conflict mitigation measures and supporting evidence-based decision-making, with the overarching goal of promoting long-term predator conservation and promoting coexistence between people and predators.



In late September 2025, a suspected poisoning incident involving six subadult lions from the Oloisukut Pride was reported by the Oloisukut Lion Ambassador. MPCP responded in coordination with Kenya Wildlife Service veterinary and investigative teams. All six lions received emergency treatment, after which three recovered quickly, while three required extended care.



The three severely affected females were transferred to the Mara Triangle enclosure for continued treatment and monitoring, and later made full recoveries. Following their release, all six lions successfully reunited with their mothers in Oloisukut Conservancy.

A tracking collar was fitted on one female to support post-release monitoring. The incident underscores the importance of rapid response, collaboration with local partners, and community-based reporting in mitigating human-wildlife conflict.

Track Movements of Collared Lions

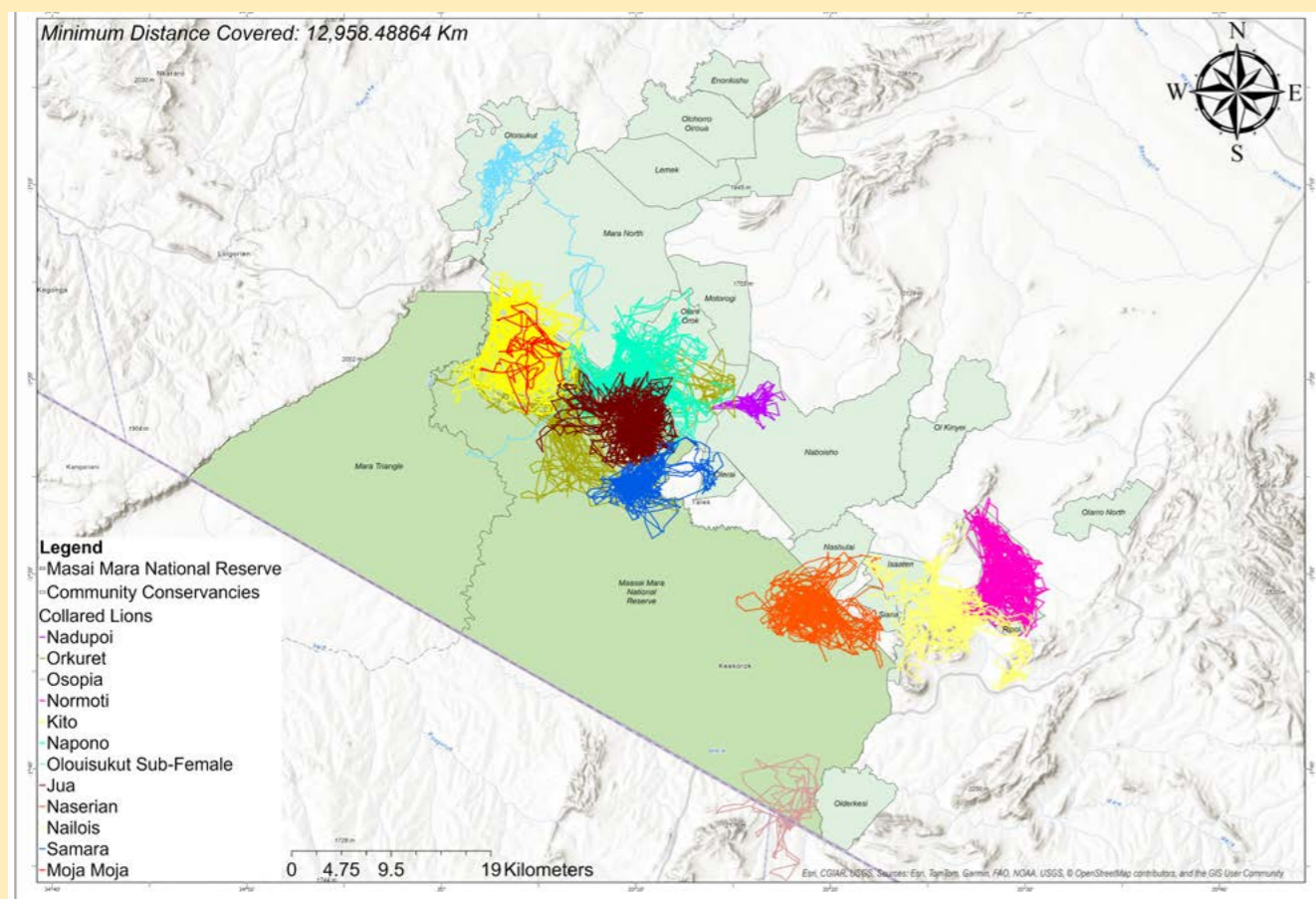


Figure 2: Tracking Movements of Collared Lions.

Collared Lions	Pride name	Location	Distance Coverage(km)	99% Home range utilization (km ²)
Nadupoi	Moniko Sankai	Naboisho Conservancy	195.924	25.875
Orkuret	Satellite male (No pride)	Dual range - MMNR & Olare Motorogi Conservancy (OMC)	1332.821	281.687
Osopia	Border Pride	MMNR Kenya-Tanzania	219.170	167.250
Normoti	Normasi	Ripoi Conservancy	1758.438	90.875
Kito	Marsh	Marsh-MMNR	1505.766	149.687
Napono	Engoyanai	Olare Motorogi Conservancy (OMC)	2055.576	162.374
Oloisukut female	Oloisukut Pride	Oloisukut conservancy	438.201	127.437
Jua	Topi	OMC & MMNR	1761.829	102.687
Naserian	KWS	KWS Research Station-MMNR	1430.545	109.937
Nailois	Isanchu	Isaaten & Siana Conservancy	1262.770	160.812
Samara	Fig Tree	MMNR & Olerai Conservancy	858.595	75.063
Moja Moja	Topi	Marsh-MMNR	138.815	70.625



Track Movements of Collared Cheetahs

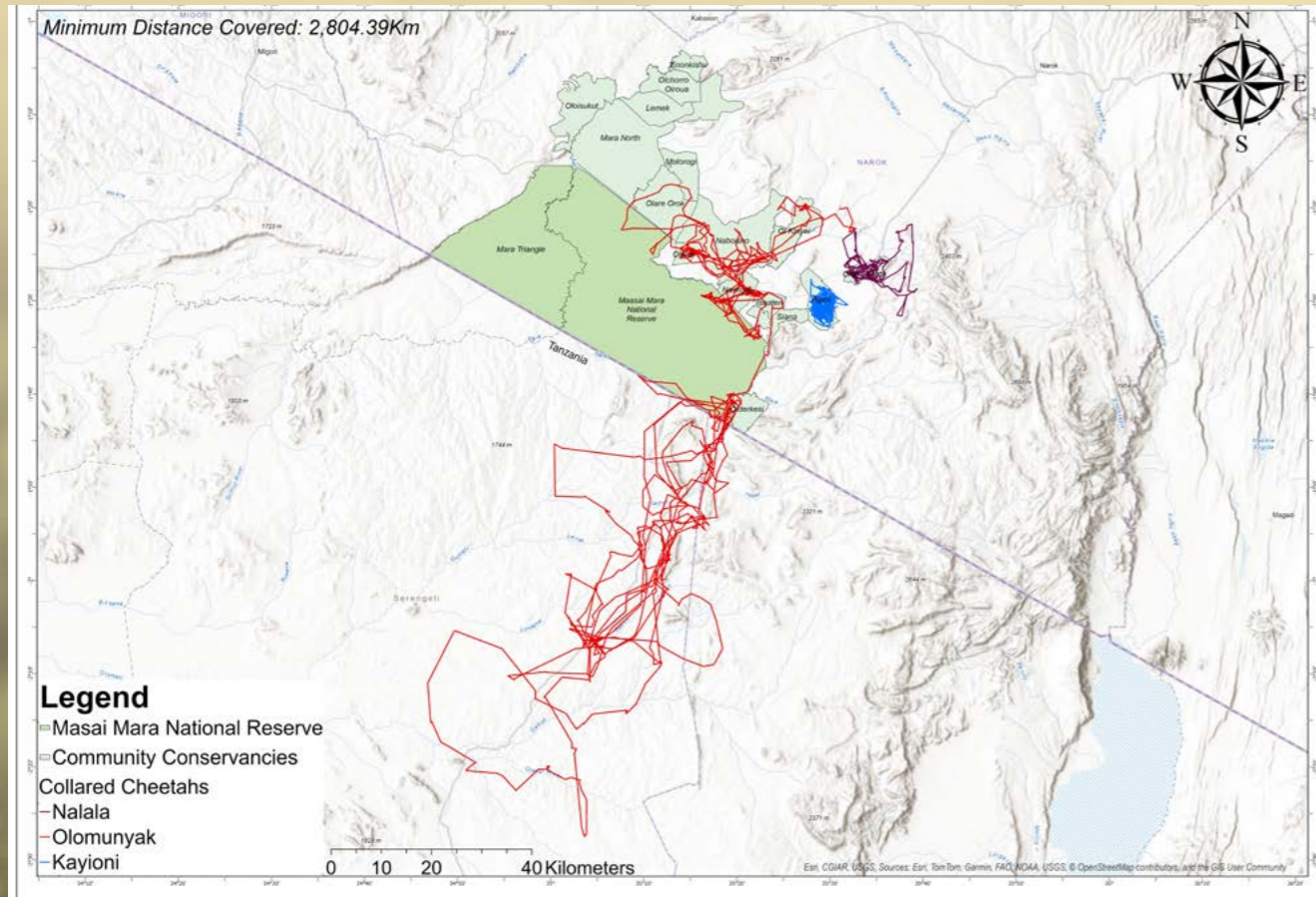


Figure 3: Tracking Movements of Collared Cheetahs.

Collared Cheetah	Location & History	Distance Coverage(km)	99% Home range utilization (km ²)
Olomunyak (Dispersing male)	Naboisho, MMNR, Serengeti	2019.033	3,604.000
Nalala (Dispersing male)	Olaro, Ripoi, MMNR	275.166	264.250
Kayioni (Territorial male)	Ripoi Conservancy	510.193	63.375





MPCP's Senior Programme Scientist
Niels Mogensen giving a presentation
at Governors' Private Camp

Open Discussion on Collaring

On May 3, 2025, the Mara Predator Conservation Programme (MPCP), in collaboration with Governors' Camp, hosted a hybrid open discussion titled **"Collars for Conservation."** Recognizing the link between sustainable tourism and predator protection, this collaborative discussion offered a unique platform to bring our scientific work directly to a wider audience of conservation enthusiasts, safari guides, and global stakeholders.

Held in person at Governors' Private Camp and streamed online, the event successfully united local and international stakeholders around a shared goal: advancing predator conservation in the Mara through science-driven collaboration and outreach.

The session was led by MPCP's Senior Programme Scientist, Niels Mogensen, who provided an overview of the programme's use of GPS collars in the Greater Mara Ecosystem. The primary objective was to demystify the science and ethics behind predator collaring and demonstrate its role in mitigating human-wildlife conflict.

The presentation demonstrated how real-time GPS data and EarthRanger geofencing are used to alert our Lion Ambassadors, allowing them to intercept predators and mitigate human-wildlife conflict before it occurs. It also provided insights into how the data collected from these collars guide sustainable grazing plans and inform national wildlife policy.

We extend our special thanks to the team at Governors' Camp, whose partnership was instrumental in hosting this event and who continue to be supporters of our conservation efforts.



Scan to watch



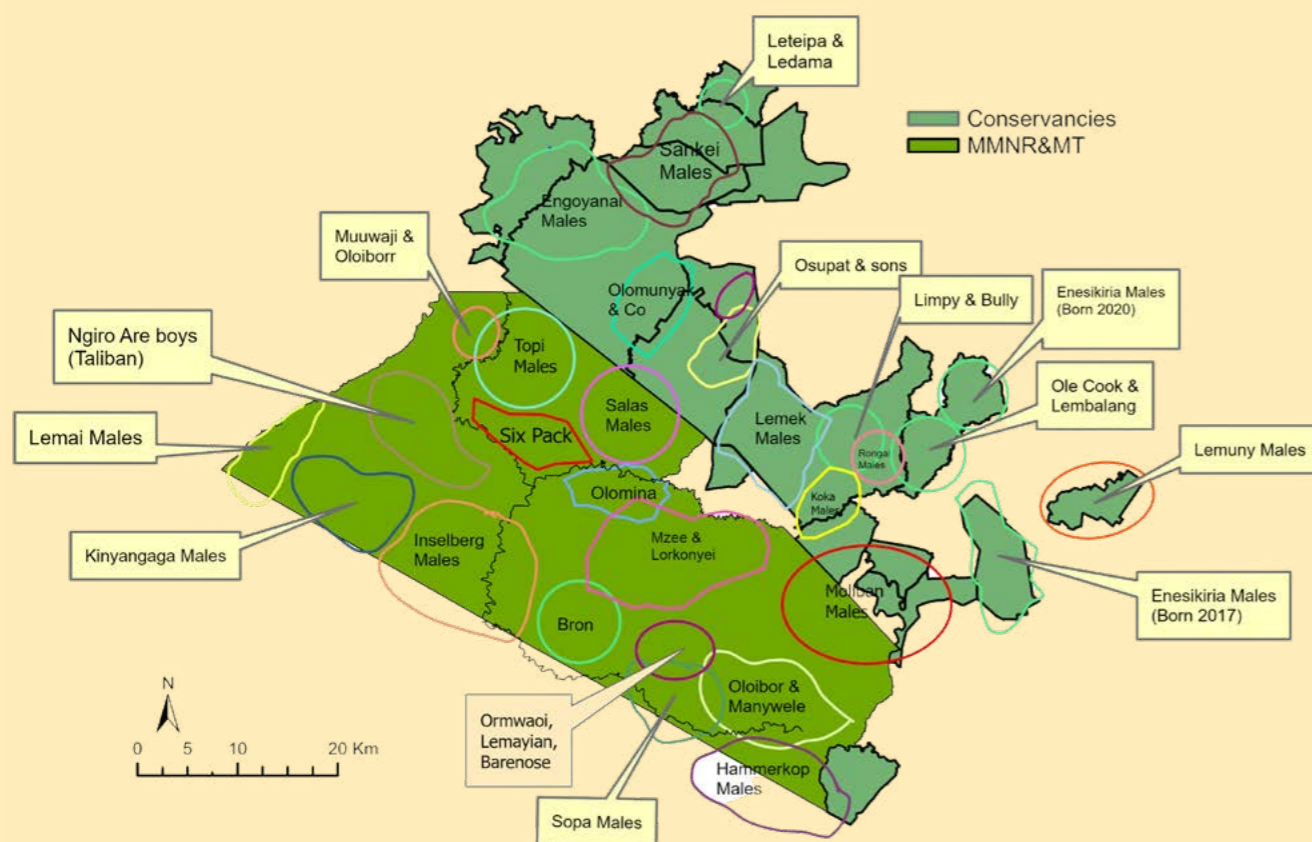
© Maureen Gathoni

Lions

Coalition map



- The Mara currently has 30 male coalitions
- The territory sizes are based on our data, either our sightings data or our collar data for the second half of 2025.
- Some of the territories shift frequently.
- Coalition areas are temporary.
- We have simplified the territories and minimized overlap to avoid a messy map and confusion. Most of these coalitions overlap tremendously.
- We have only included coalitions that are controlling at least one pride or have recently had a mating session with pride females.



Mara Male Coalition Dynamics

Our long-term data show that male lion coalitions in the Mara typically hold prides for short periods, most often between 3 and 15 months. This contrasts sharply with the Serengeti, where coalitions commonly remain in control for two to three years.

Short male tenure has important consequences for lion reproduction. Male lions must remain with a pride for at least ~18 months to protect cubs until independence. When coalitions are replaced sooner, cubs born during that period are unlikely to survive, largely due to infanticide following takeovers. As a result, many coalitions in the Mara fail to raise cubs to independence.

This means that, although lionesses may continue to give birth, recruitment into the adult population is constrained by frequent male turnover rather than by low reproduction. High turnover of males, therefore, creates an unstable breeding environment that likely contributes to limiting population growth.

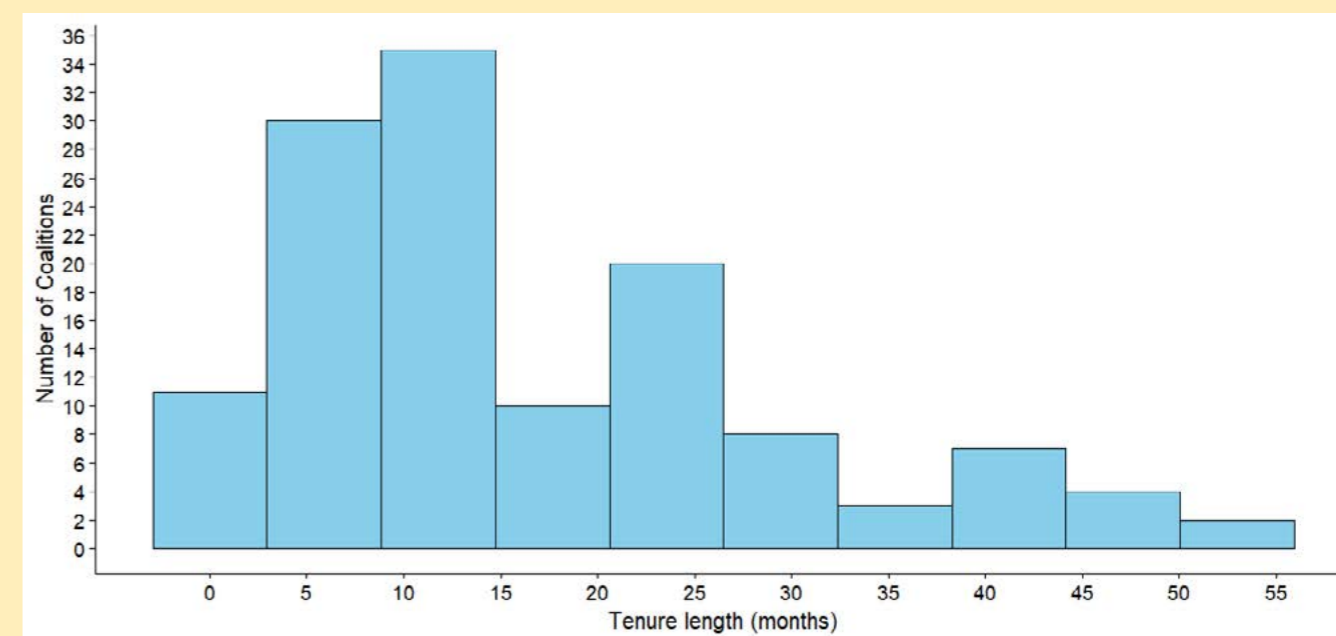


Figure 4: Histogram showing the duration (months) that male lion coalitions hold control of prides. Most coalitions persist for short periods (predominantly 3–15 months), with relatively few maintaining tenure long enough to raise cubs to independence, resulting in a strongly right-skewed distribution.

Most lion prides in the Mara interact with multiple male coalitions over time, which is expected given that our monitoring data extend back to 2014. However, the figure shows that many prides have encountered a high number of different coalitions, with a substantial proportion experiencing four or more.

This pattern indicates not just normal turnover, but repeated replacement of males controlling prides. Such frequent turnover shortens the average duration of male tenure, consistent with the tenure distribution shown above, and increases the likelihood of cub loss during takeovers, contributing to constrained recruitment despite continued reproduction by females.

Pride encounter with male coalitions

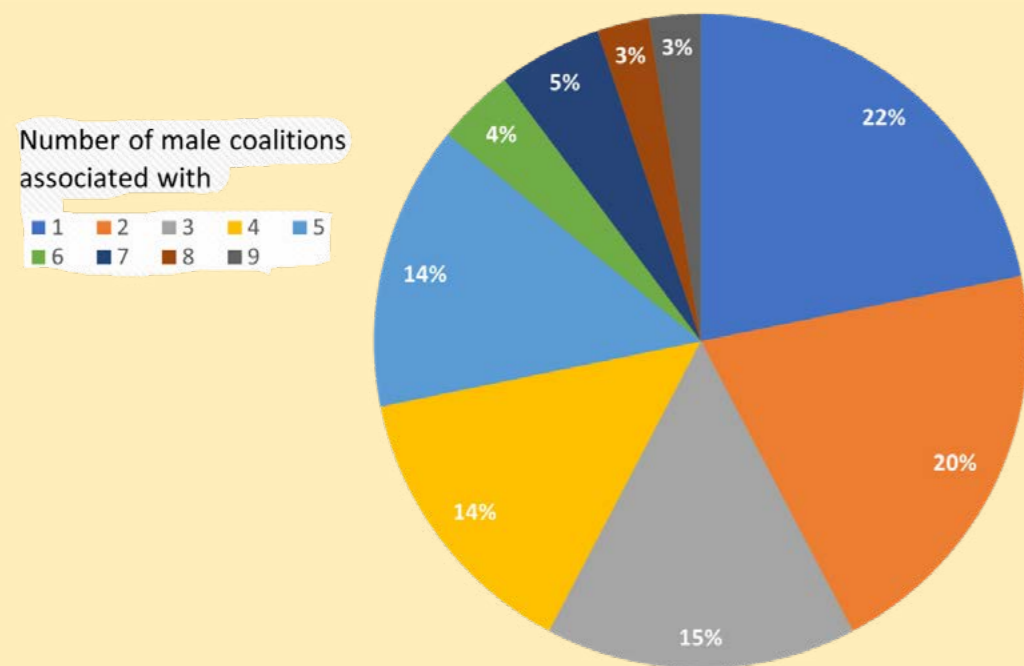


Figure 5. Percentage of prides encountering different numbers of male coalitions since 2014



Lion mortalities

Pololeti Conservation Area Poisoning



Osofia

In February 2025, a poisoning incident occurred along the Kenya-Tanzania border within the Pololeti Conservation Area. The event resulted in the death of a collared adult male lion, Osofia, together with three adult females from his pride and one cub. All five lions died after feeding on a poisoned carcass placed on the Tanzanian side of the border.

The remaining pride members, including additional females and cubs that were on the Kenyan side at the time, were not affected. Following the loss of Osofia and the disappearance of his coalition partner, who was likely also impacted by the poisoning, the Hammerkop males (also known as the Mugoro nomads) took over the pride and continue to hold the territory.

Lemoniko

Lemoniko, a male lion born in 2019 to the Sankai Pride in Olare-Motorogi Conservancy, was confirmed dead on 7 September 2025 near Lorian Camp. Based on injuries reported by guides, his death was most likely the result of conflict with other lions, although this could not be conclusively determined. By the time the monitoring team reached the site, only skeletal remains were present.

Lemoniko was sired by Olope and Olbarikoi (Frank2 and Jesse2) and was the last surviving member of the once-dominant Sankai Boys coalition. Together with his brothers Kiliya and Lenchada, he previously controlled the Rekeru Pride before being displaced by the Kijana-Olchore coalition.

Following the loss of his brothers, Lemoniko lived nomadically and later formed a coalition with Orkuret, settling in the Double Cross area. His death marks the end of the Sankai Boys lineage and illustrates the high mortality risk faced by male lions in a competitive landscape.



Lemoniko

Orkitok



In mid-May 2025, Orkitok, one of the three Salas males, sustained serious injuries during a territorial confrontation. He received veterinary treatment from Kenya Wildlife Service veterinarians and was closely monitored by our team in collaboration with National Reserve officials and Olare Motorogi Conservancy rangers.

Despite these efforts, Orkitok died during the night of 6 June 2025 and was found the following morning. Orkitok, together with his brothers Olepolos and Osapuk, was born in 2015 to the Salas Pride.

The coalition held control of the Rehero and Topi Prides for several years and successfully raised multiple litters, including the seven Topi males. Until his death, the Salas males remained the pride males of the Topi Pride.

Rocky Valley Coalition

The Rocky Valley coalition lost two of its members in 2025. Lorkulup, a prolific buffalo hunter frequently observed with the pride, died in January. The cause of his death remains uncertain and has been widely debated, with possibilities including human-wildlife conflict or natural causes. At present, MPCP does not have sufficient evidence to conclusively determine the cause.

Oloshipa, known for his role in expanding the coalition's territory, was killed in September during a territorial confrontation with the Salas males.

For several years, the Rocky Valley coalition controlled one of the largest territories in the Greater Mara Ecosystem, encompassing the Maji Ya Fisi, Serena Rongai, and Fig Tree prides. These prides occur in areas subject to high levels of human-wildlife conflict, and the repeated loss of pride males in this region reflects the cumulative pressures faced by lions in these landscapes.



Rocky Valley

Serian male



In early December 2025, guides in Olare Motorogi Conservancy reported a dead subadult male lion, which we identified as one of the two Serian males, the pride males of the Isiketa Pride.

Field assessments indicated that he was killed during a territorial confrontation, most likely by Osupat and his three sons, who appear to be challenging for control of the pride.

Such events reflect the natural dynamics of lion populations, where territorial competition frequently results in significant mortality. These changes play an important role in shaping pride composition and long-term population structure within the ecosystem.

Oloisukut male

In late May 2025, guides in Mara North Conservancy reported an unusual territorial encounter involving the four Enkuyanai males and the two adult Oloisukut males.

During the confrontation, one Oloisukut male was killed. One of the Enkuyanai males, Lenkoe, was subsequently observed dragging and feeding on the carcass.

Prior to the incident, the Oloisukut males had been repeatedly sighted overlapping into the Serian Pride territory, which is controlled by the Enkuyanai coalition.

Following the attack, the surviving Oloisukut male fled the area and returned to Oloisukut Conservancy but later disappeared.



One of Oloisukut Males

Olopi



Olopi, a male born in Naboisho Conservancy to the Sampu Enkare Pride, died in December 2025 following a territorial takeover by the Molibany males, who entered the Reserve from Siana Conservancy earlier that month. Olopi sustained severe injuries during the confrontation and was observed in poor condition for several weeks before his death. His coalition partner, Olbarnoti, was not sighted after the Molibany males arrived.

Olopi's life was characterised by repeated territorial challenges and losses following dispersal. After initially dispersing with his brother, who died shortly thereafter, Olopi spent an extended period as a nomadic male.

He later formed a coalition with Dark Mane, and together they took over the Isanshu Pride and sired a litter. After losing Dark Mane in subsequent conflicts, Olopi partnered with Olbarnoti and took over the KWS Pride. The Molibany takeover ultimately ended his tenure, underscoring the high risks faced by male lions during repeated territorial challenges.



© Sam Ruby



Cheetahs

In the 2024 annual report, we reported a 100% cub mortality rate. After the report was finalised, however, we became aware of two cubs born in Olarro Conservancy, whose mother is Nabaya. These cubs were nearly one year old when first recorded, indicating that they were born in 2024. The figure has been updated accordingly.

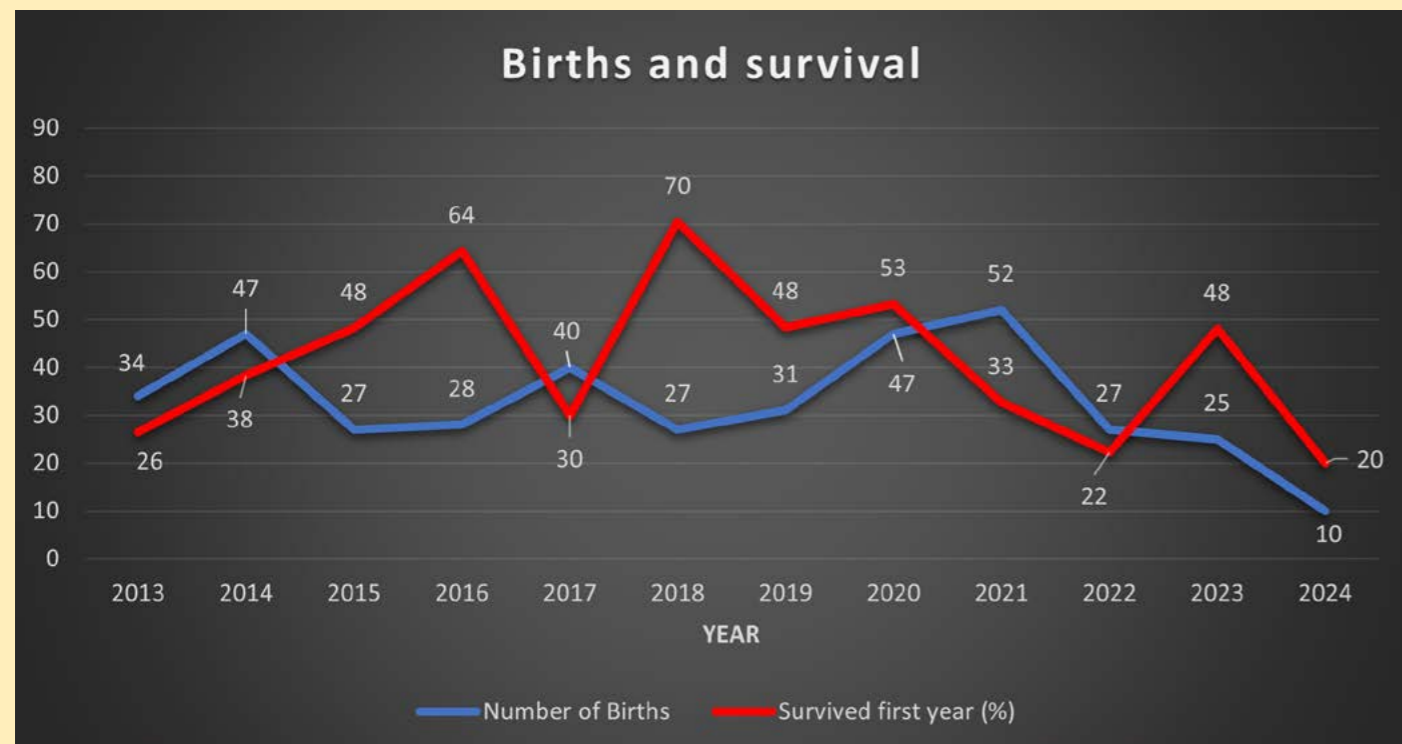
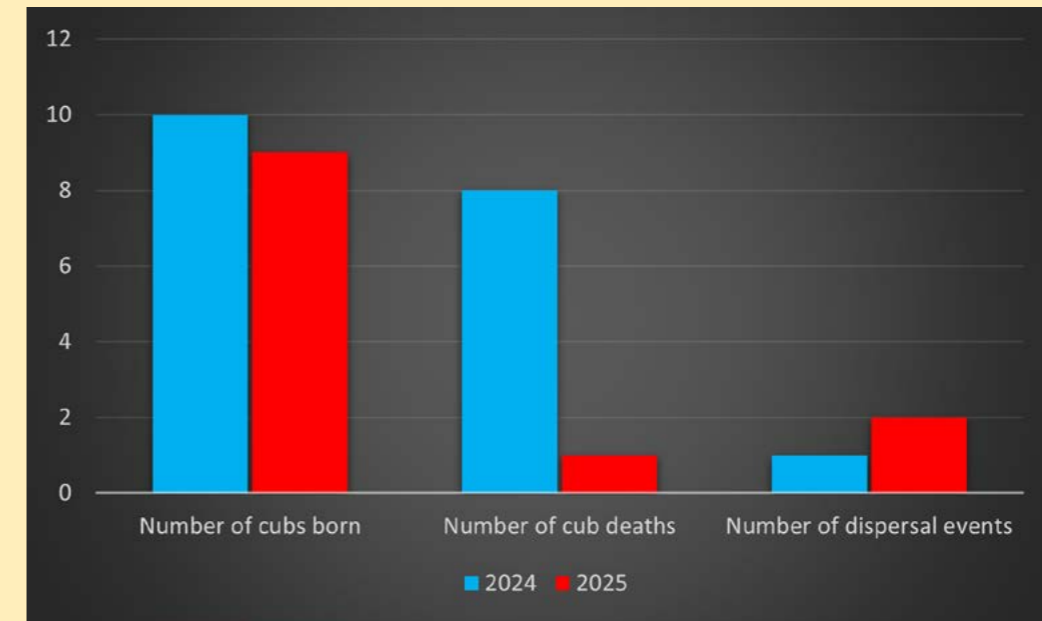


Figure 6: Annual number of cubs recorded (blue line) and the proportion of cubs that survived their first year (red line). The number of cubs recorded reflects, in most cases, the number of cubs observed after emerging from the den.

The true number of cubs born is likely higher but cannot be reliably quantified, as cubs remain concealed during early life stages and disturbance of denning sites is deliberately avoided.

In 2025, we documented nine cubs known to have been born to four different mothers. Survival beyond the first year, a critical benchmark for cheetah recruitment will only be confirmed by the end of 2026.



9 cheetah cubs born to four mothers.



Cheetah cub survival to be confirmed by the end of 2026.

Figure 7: The number of cubs births, deaths and dispersal events in 2025

Cheetah Mortality Nora

Nora, the oldest known female cheetah in the Greater Mara Ecosystem, was killed by a leopard in the National Reserve in November. She was approximately 13 years of age. Over her lifetime, she produced several litters of cubs, but only one male reached independence, in 2016. She was also one of the few cheetahs that remained a full-time resident within the Reserve.

Predation of cheetahs by leopards is not uncommon in the Mara. However, in this case, questions remain as to whether the presence of vehicles in the area may have influenced the outcome of the encounter. While the exact circumstances cannot be determined, Nora's death highlights the multiple and interacting pressures faced by cheetahs in the Mara, including other predators, human activity, and tourism-related disturbance.

The Mara Cheetah Crises

The Mara continues to experience critically low cheetah numbers, particularly among adult females, across its protected areas. Our most recent estimate for 2025 indicates seven resident adult female cheetahs.

While this represents an improvement from the previous year, it remains well below the 19 adults recorded in 2020. Addressing this ongoing decline remains a central priority for the program.

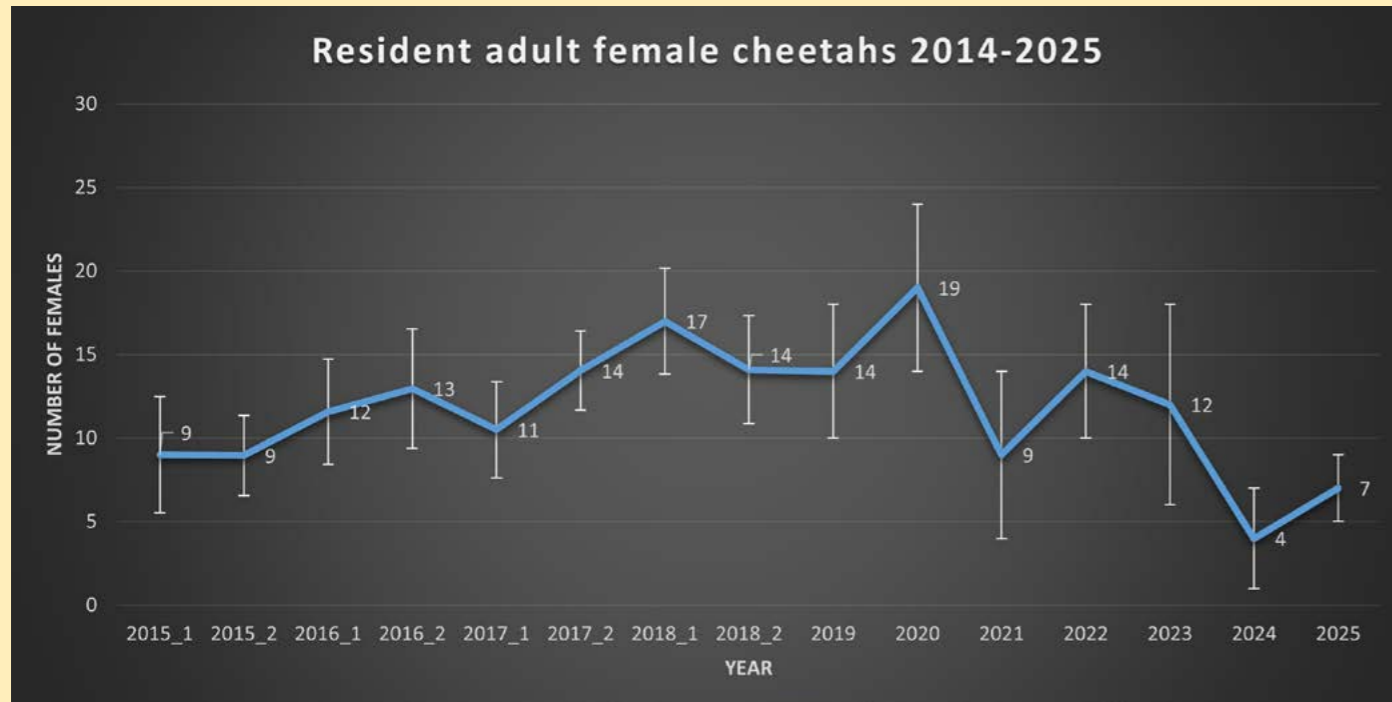


Figure 8: The population trend for Mara adult female cheetahs that stay and reproduce with the Mara protected areas. The number was at an all-time low in 2024 with a slight improvement in 2025.

In 2025, we initiated several research projects aimed at reversing the decline in the Mara's cheetah population. These projects unite our carnivore and community teams to address human impact on cheetahs within protected areas and conflict with cheetahs within community areas.

Tourist Vehicles

In November and December 2025, we began investigating how the presence of vehicles affects cheetah behaviour. Our previous research has documented a direct negative correlation between the number of vehicles and the number of cubs a mother can successfully raise to independence, while recent research in the Serengeti showed a negative correlation between the number of vehicles and the likelihood that cheetahs will hunt.

However, aside from general recommendations to reduce vehicle presence at cheetah sightings, we still lack precise data needed to establish specific management guidelines. For example, we do not know how many vehicles at a cheetah sighting are considered "too many," or how close vehicles can get before negatively impacting cheetah behaviour.

To develop these guidelines, we designed a multi-camera protocol to simultaneously record high-resolution footage of cheetah behaviour

and vehicle activity. During our initial field season, we captured videos at 10 different cheetah sightings. By analysing this footage, we can measure subtle changes in cheetah behaviour, such as vigilance levels, time spent resting, and movement patterns, in relation to vehicle presence and distance.

We aim to identify the specific vehicle thresholds most likely to trigger increased stress or movement in cheetahs. This will enable us to provide rangers and tourist guides with clear, evidence-based guidelines for managing vehicle presence at cheetah sightings that minimize impact on cheetahs while maximizing tourist experiences.

While our initial field season was a success, we will continue to record videos through July to ensure robust findings, with initial results expected by the end of 2026.



Community Survey

In 2025, we also conducted a comprehensive survey to identify where cheetahs face the highest risk of conflict within local communities. Our research focused on two key indicators: the distribution of shoats, which cheetahs are most likely to kill, and local perceptions regarding retaliation against cheetahs.

Our findings identified several "hotspots" where high shoat density overlaps with a greater risk of retaliation. Specifically, the regions north and east of Ol Kinyei Conservancy and east of the Olorro and Olderkesi conservancies emerged as high-priority areas (Figure xx). In these zones, cheetahs are both more likely to attack livestock and are also at higher risk of being killed in retaliation.

Throughout 2026 and beyond, we will use this data to launch targeted outreach, herder training, and monitoring initiatives designed to reduce livestock losses and protect cheetahs within these critical communities.

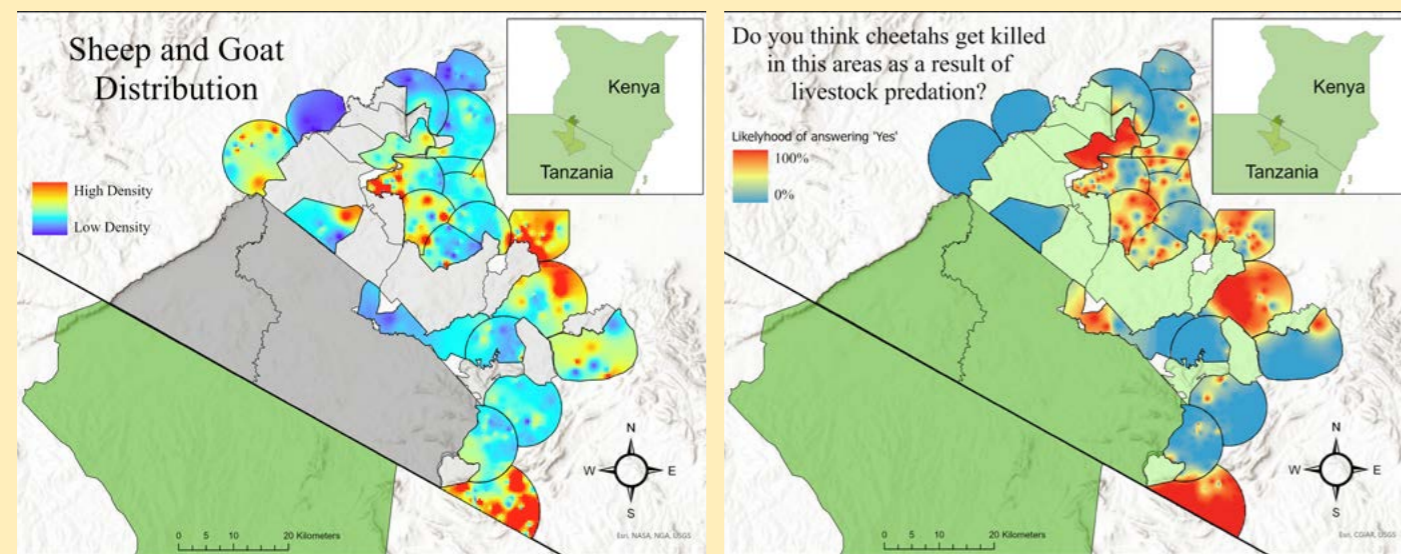
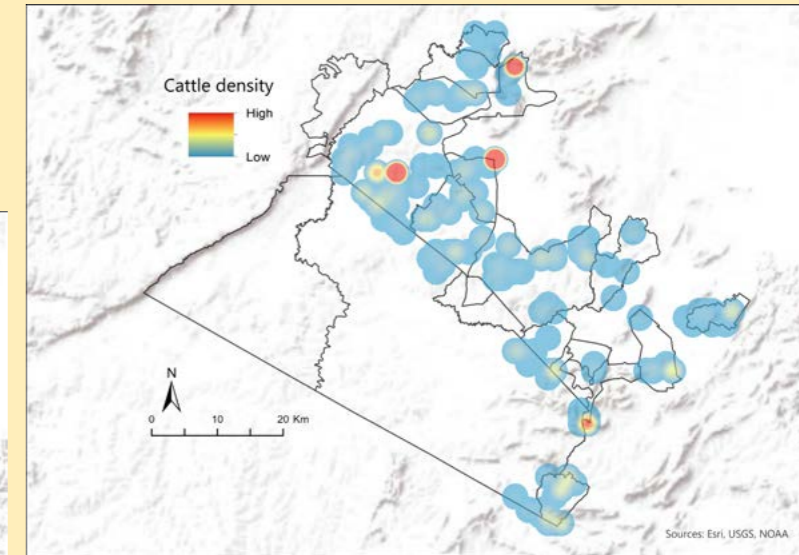
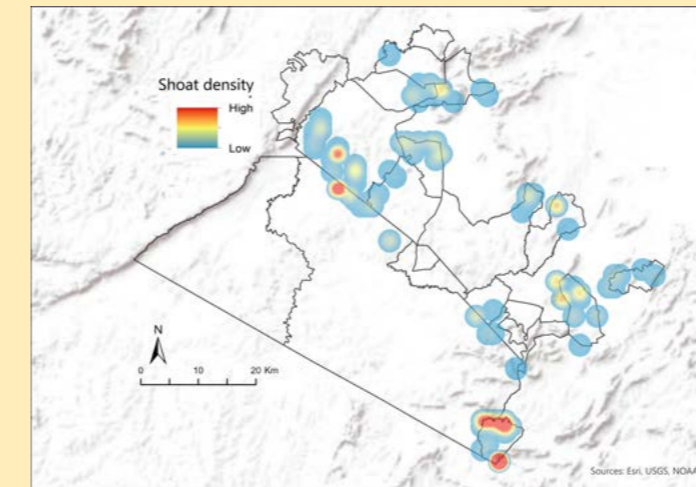


Figure 9: Comparative spatial distribution of shoats (left) and perceived risk of retaliation against cheetahs (right). High shoat densities are concentrated around Aitong Village and the regions north and east of Ol Kinyei, Olorro North, and Olderkesi Conservancies. Correspondingly, a high risk of retaliatory action is reported near Talek, north of Naboisho and Ol Kinyei Conservancies, east of Ol Kinyei Conservancy, north of Aitong Village, and east of Olderkesi.

What factors are affecting lions and cheetahs?

Livestock activity

Throughout the year, we systematically record livestock numbers across the study area. The resulting livestock maps illustrate the proportional densities of cattle and shoats (sheep and goats combined).



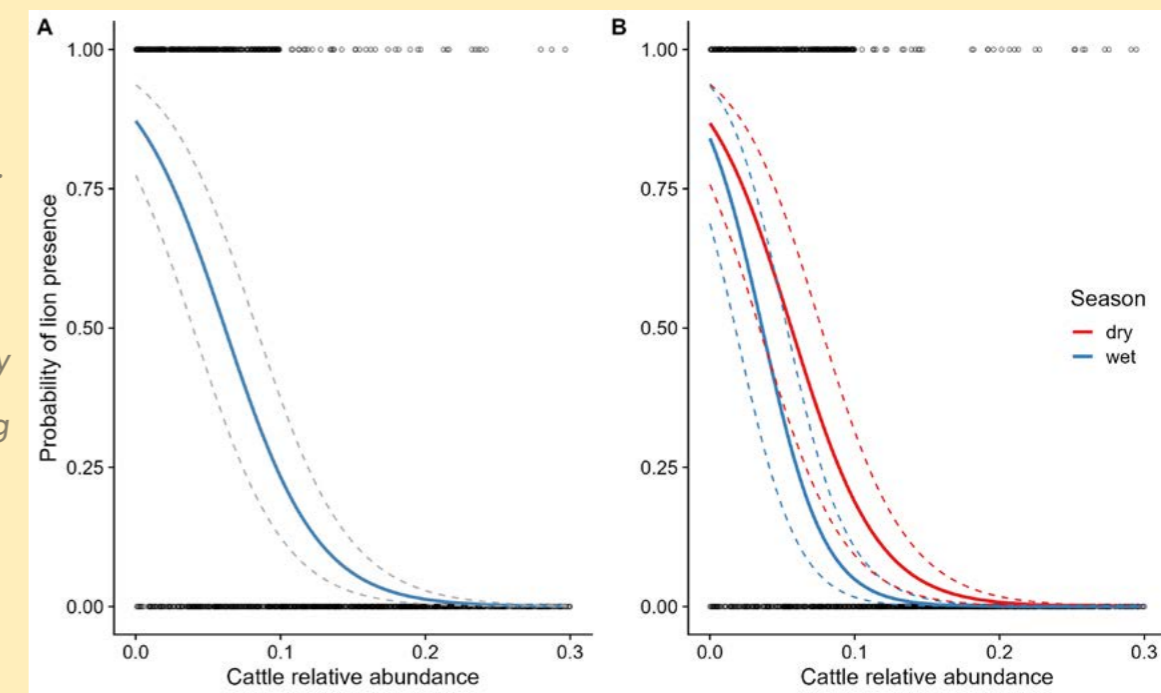
Livestock relative abundance and its impact on wildlife vary substantially among management units and across seasons.

Building on our long-term dataset, we analysed the effect of daytime cattle grazing in the conservancies on lions, and this resulted in a published paper. Our results show that livestock presence strongly reduced lion occurrence and that avoidance persisted even when cattle were absent.

Figure 10: Lion presence declines sharply as cattle abundance increases across the landscape.

Panel A shows that areas with higher relative cattle abundance are significantly less likely to be used by lions, even after accounting for differences in sampling effort.

Observed lion presences and absences closely match this predicted pattern.



Panel B shows that this effect varies by season. Lion avoidance of cattle-dominated areas is strongest during the wet season, when livestock penetrate more widely into wildlife areas, and is somewhat weaker during the dry season. Together, these results demonstrate that increasing cattle use substantially reduces space use by lions, particularly during periods of seasonal livestock expansion.

Tourism

Tourism, particularly high-intensity tourism, can have negative effects on predator populations. For example, research has shown a direct negative relationship between vehicle abundance and cheetah reproductive success, with females raising fewer cubs to independence in areas with high vehicle traffic (Broekhuis, 2018).

To assess how tourist camps influence lion populations, we analysed long-term monitoring data, resulting in a peer-reviewed publication. Our results suggest that lion density is substantially lower in areas with high camp density and that camps impose strong spatial limits on lion carrying capacity.

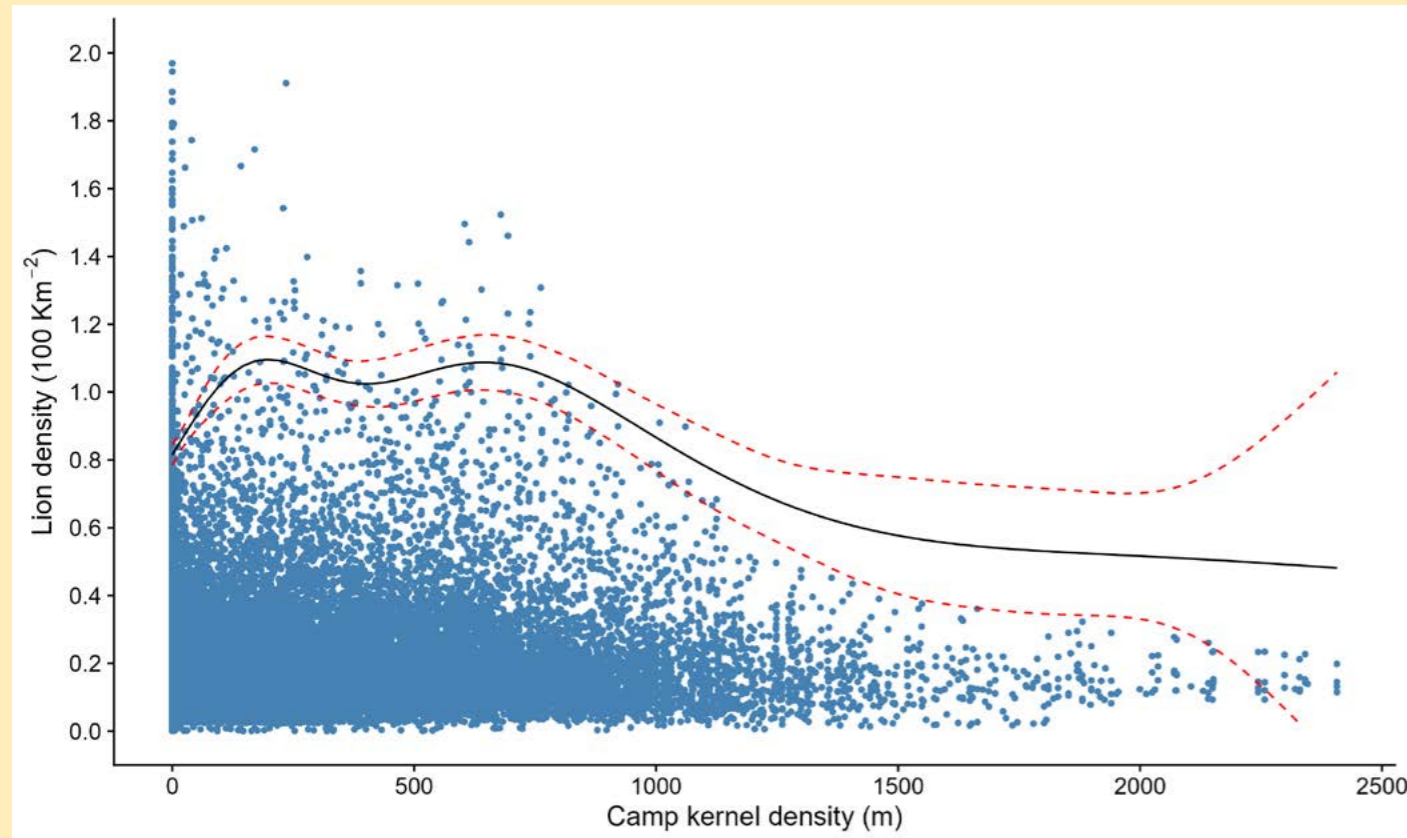


Figure 11: Maximum lion density decreases sharply as the density of tourist camps increases across the Maasai Mara. The figure shows that areas with low camp density support the highest lion densities, while heavily developed areas support far fewer lions. The solid line represents the estimated upper limit of lion density under current conditions, while the dashed lines indicate the uncertainty around this estimate. Together, these results demonstrate that tourism infrastructure strongly constrains the capacity of the landscape to support lions.

Based on these papers, we produced management reports with key findings and recommendations. See page 38 for more information on our published papers in 2025.

Hyenas

Hyenas are critical for ecosystem functioning. However, their effects on lions and cheetahs in the Mara remain poorly documented, and we will initiate our first dedicated hyena study in early 2026.

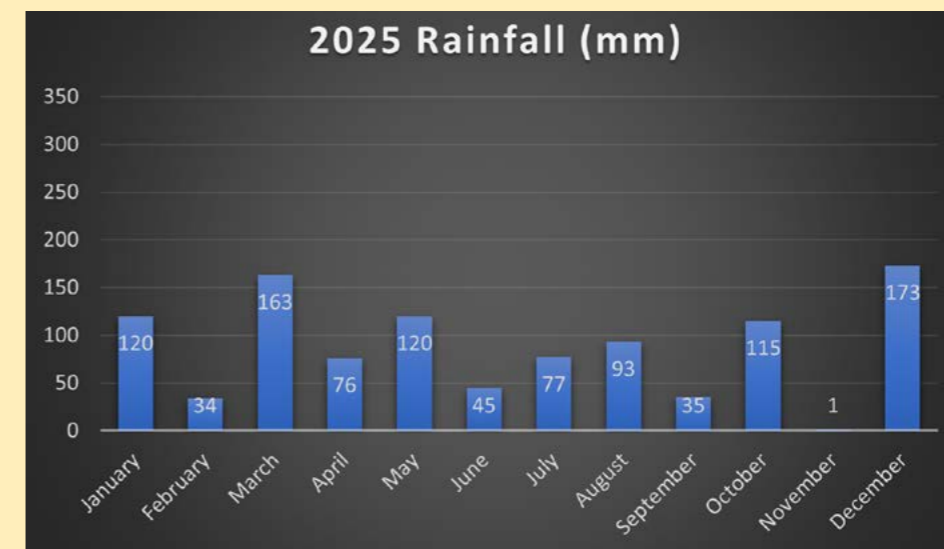
This project will address a key knowledge gap by examining how hyenas use space across the Mara conservancies and how their activities interact with human land use and the distribution of other large carnivores.

The study will focus on understanding whether hyenas influence the availability of low-risk space for cheetahs and lions, how these interactions vary across space and seasons, and where management actions could support coexistence within shared landscapes. In collaboration with the Mara Hyena Project, this work will form the foundation of a longer-term hyena research program, with findings shared directly with conservation managers to support informed, ecosystem-based decision-making.

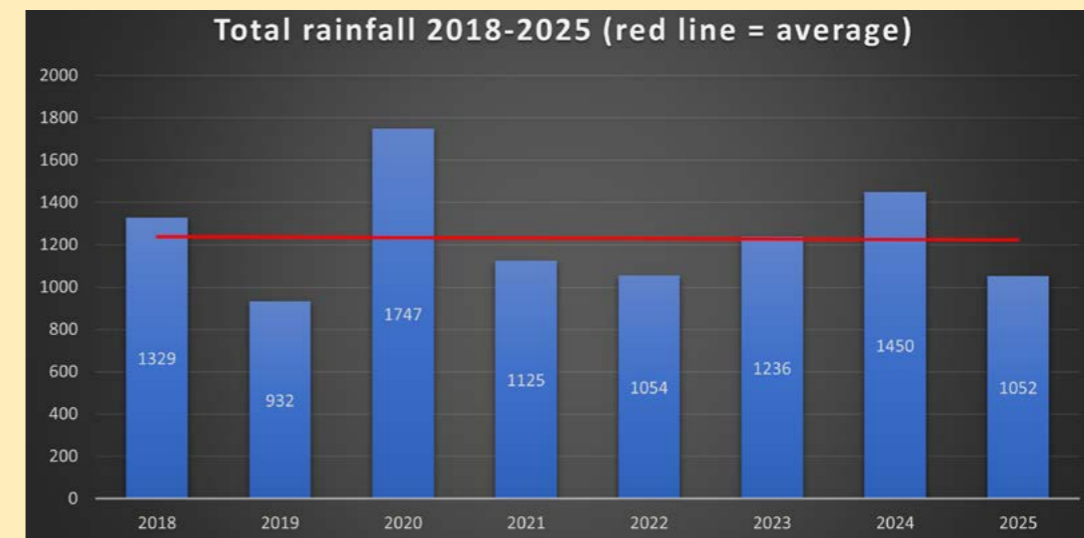


Rainfall

A total of 1052 mm of rain was recorded from the Predator Hub's weather station in 2025



The year 2025 experienced a lower precipitation than rainfall averaged over the last eight years



Publications

In 2025, MPCP was involved in the publication of four scientific papers. A summary of each paper is provided below.

Long-term evidence of livestock impacts on wildlife in the Mara

We contributed to a peer-reviewed study led by Ogutu et al. examining the effects of livestock intensification on wildlife in the Maasai Mara ecosystem. Using more than 40 years of aerial survey data (1977–2022), the study responds to claims that livestock grazing within the Reserve has limited or no negative impacts, showing instead that short-term studies can mask substantial long-term ecological change.

The analysis demonstrates that rising livestock densities, particularly sheep and goats, have been associated with severe declines in large wild herbivores, with most species over 15 kg declining by more than 70%. Increasing livestock pressure has displaced wildlife into the Reserve, especially during droughts, reducing wildlife biomass, species richness, and landscape connectivity outside protected areas.

The findings underline the importance of long-term monitoring and provide strong evidence that expanding or normalising livestock grazing within the Reserve would accelerate wildlife declines and undermine the Mara's role as a critical drought refuge.

Demographic differences in lion movement in human-dominated landscapes

We also contributed to a peer-reviewed study led by Kaptein et al. examining how lions of different demographics respond to human activity in the Greater Mara Ecosystem. Using GPS collar data from territorial adult females and dispersing males monitored by MPCP, the study assessed how movement behaviour changes inside and outside wildlife areas, and between day and night.

Our results show clear demographic differences in how lions navigate human-dominated landscapes. Dispersing males moved faster and more directly, particularly outside protected areas and at night, suggesting reactive responses while traversing unfamiliar and risky environments. In contrast, territorial females showed more cautious, place-based behaviour, reducing movement outside wildlife areas during the day, likely reflecting their familiarity with local risk patterns. Our findings highlight that anthropogenic pressures do not affect all lions equally and that dispersing individuals may face disproportionately higher risks and energetic costs when moving through shared landscapes.

Our work strengthens the case for incorporating demographic differences into lion conservation and land-use planning. It also reinforces the importance of maintaining connected wildlife areas and low-risk movement corridors, particularly for dispersing males, to support long-term population viability in the Greater Mara ecosystem.

Human-driven landscapes of fear for lions in the Maasai Mara

We published a peer-reviewed paper in *Biological Conservation* examining how human activities shape lion space use across mixed conservation-pastoralist landscapes in the Maasai Mara.

Using nine years (2015–2023) of systematic lion and livestock survey data from seven community conservancies, we combined long-term field monitoring by our team with advanced Bayesian spatial models to assess how livestock, settlements, and environmental factors influence where lions occur.

Our results show that livestock, especially cattle, are the dominant factor limiting lion presence in conservancies. Areas with high cattle use were far less likely to be occupied by lions, even on days when cattle were not present, indicating long-term spatial avoidance rather than short-term concealment. Sheep and goats and higher densities of human settlements further reduced

lion presence, while environmental features such as rivers and denser vegetation acted as important refuges. Together, these findings demonstrate that human activities create a “landscape of fear” that displaces lions from otherwise suitable habitat, compressing them into smaller areas and potentially increasing competition and conflict.

Our study provides clear management implications for the Mara conservancies. Limiting cattle densities, enforcing grazing boundaries, and protecting key refuges such as riverine and wooded habitats could substantially reduce lion displacement and support coexistence between pastoralism and wildlife.

Our work represents a major contribution from our programme, linking long-term field data with policy-relevant science to inform sustainable land-use planning in the Greater Mara ecosystem.

Tourist camps and lion conservation in the Maasai Mara

We also published a study examining how tourist camps affect lion populations in the Maasai Mara. Drawing on eight years of high-resolution lion monitoring data (2014–2022) combined with detailed mapping of tourism infrastructure, our study assessed how the density and placement of permanent camps influence lion space use and carrying capacity within protected areas.

Our results show that lion densities are highest in areas without tourist camps and decline sharply as camp density increases. These patterns were independent of prey availability, vegetation type, or proximity to rivers, indicating that camps themselves reduce effective lion habitat. Newly established camps were associated with rapid declines in local lion density, demonstrating immediate displacement effects. While tourism provides essential conservation revenue, our findings highlight how poor spatial planning and camp clustering can unintentionally undermine lion conservation.

Our study received wide attention beyond the scientific community, including coverage by *Africa Geographic* and *Tourism Update*, helping to translate these findings into a broader conservation and tourism dialogue.

Management Reports

Active Livestock Management Can Improve Coexistence with Cheetahs in Kenya's Maasai Mara

Drawing on research from Dr. Brian Schuh's dissertation, MPCP produced a management report detailing how livestock encounters influence cheetah behaviour.

Using a robust experimental framework, this study compared how cheetahs in the Maasai Mara respond to interactions with cattle and shoats. The research revealed that encounters with cattle may displace female cheetahs, particularly those with cubs. Such displacement causes more than a simple change in location; it can trigger a cascade of negative effects, including heightened stress, altered habitat use, and disrupted hunting patterns.

Furthermore, displaced cheetahs may be forced into areas where they face a higher risk from other predators or human threats. For a mother cheetah, these combined pressures could significantly reduce her ability to successfully raise her cubs to independence.

In contrast, most cheetahs did not move following interactions with shoats, nor did

they show any inclination to hunt them. This reinforced previous research demonstrating that cheetahs prefer wild prey, suggesting that livestock predation by cheetahs is most likely to occur when wild prey is scarce or if an individual has developed a habit of hunting them.

Based on these results, we have proposed specific strategies to mitigate the impact of livestock interactions on individual cheetahs. We recommend that rangers and herders actively divert cattle away from known cheetah locations to avoid displacement, with a high priority on avoiding females with cubs.

Additionally, managing livestock to ensure healthy populations of wild prey and establishing daily "livestock-free zones" will allow displaced cheetahs to recover and avoid repeated encounters. Together, these recommendations would reduce the frequency of cheetah-livestock interactions and minimize livestock predation risk.



Olkurotto wildlife club members and patron pose for a photo with the KWT board members and team during Nick Lapham's visit. © Felixie Kip

COMMUNITY ENGAGEMENT Human-Wildlife Conflict Mitigation

The Mara ecosystem is at a crossroads, where the survival of iconic predators is increasingly caught between shrinking habitats and the daily realities of the people living alongside them. Between January and March 2025, this tension manifested in a series of retaliatory poisonings sparked by the loss of livestock within the Ecosystem. These incidents left a heavy toll: five lions were lost in Tanzania's Pololeti area, a young cub perished in Oloisukut, and a female lion was killed in Mara North. The devastation extended to over a dozen hyenas and several vultures, leaving a gap in the region's natural balance.

Behind these numbers are local communities struggling to protect their livelihoods from predator attacks. Recognizing that we cannot protect predators without also protecting the interests of those who share their land, MPCP is shifting the focus toward human-centered, non-lethal solutions. The program is working to bridge the rift between people and wildlife by moving away from the cycle of retaliation and toward practical, preventative measures. The goal is to move past survival and to a future where the people of the Mara and its predators can once again thrive side by side.

403

herders trained on proper herding practices topics

5

Recycled Predator Proof Bomas constructed

360

lion lights deployed in conflict hotspot Bomas

10

chain links distributed to reinforce 5 bomas.

Lion Ambassadors Programme

In 2025, Lion Ambassadors removed more than 216 snares set across the landscape, targeting a range of wildlife species. Herbivores, particularly impala, eland, and gazelles were the most frequently targeted, strongly indicating that many of these activities were linked to bushmeat hunting.

However, a smaller number of snares were deliberately set for predators such as hyenas, cheetahs, leopards, and lions, mainly in areas experiencing heightened human-wildlife conflict within community lands.

The most recorded snares included neck and foot snares, largely aimed at herbivores, while hanging snares, along with the use of spears and wire, were primarily directed at predators as acts of retaliation.

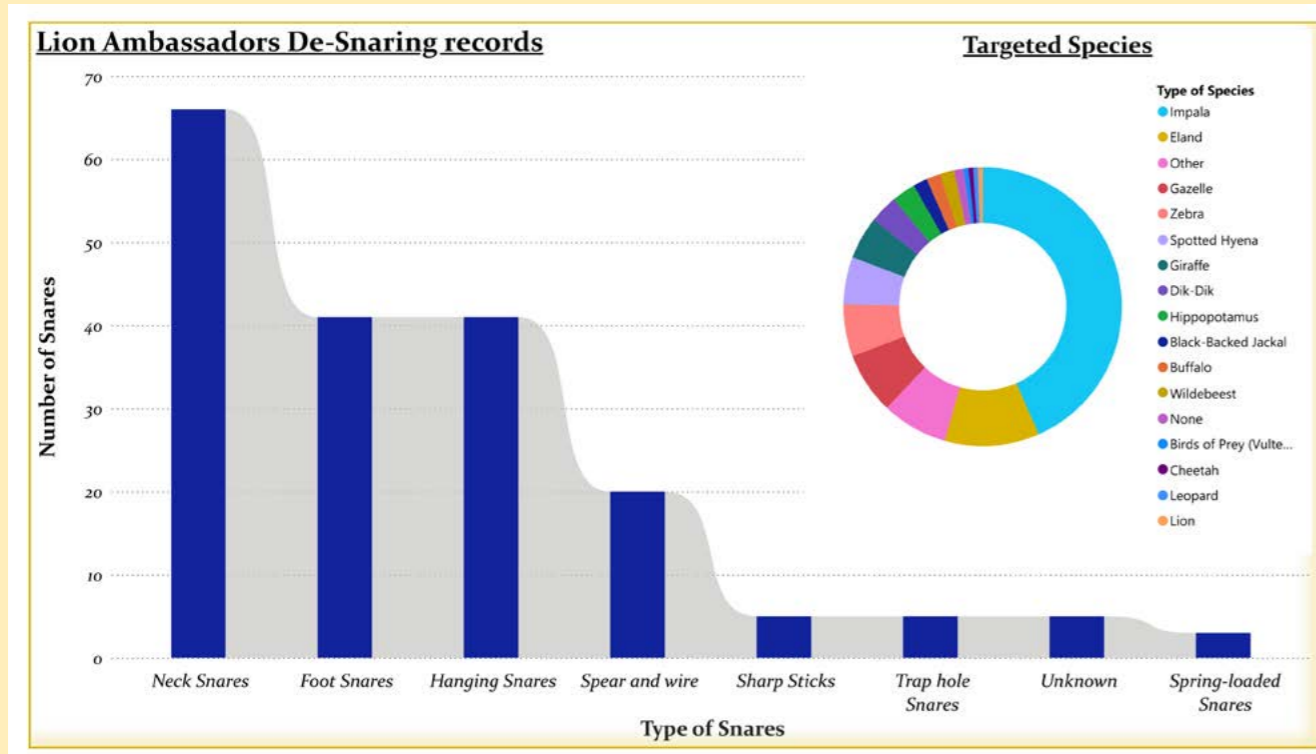


Figure 12: Lion Ambassadors De-Snaring Records



216

Snares targeting various wildlife species were removed from the community area.

Danson Tikoilel, a Lion Ambassador from Zone 7 (along the edge of Enarau Conservancy), removes snares during his routine patrol.



Geofence Breaks Alerts & Response

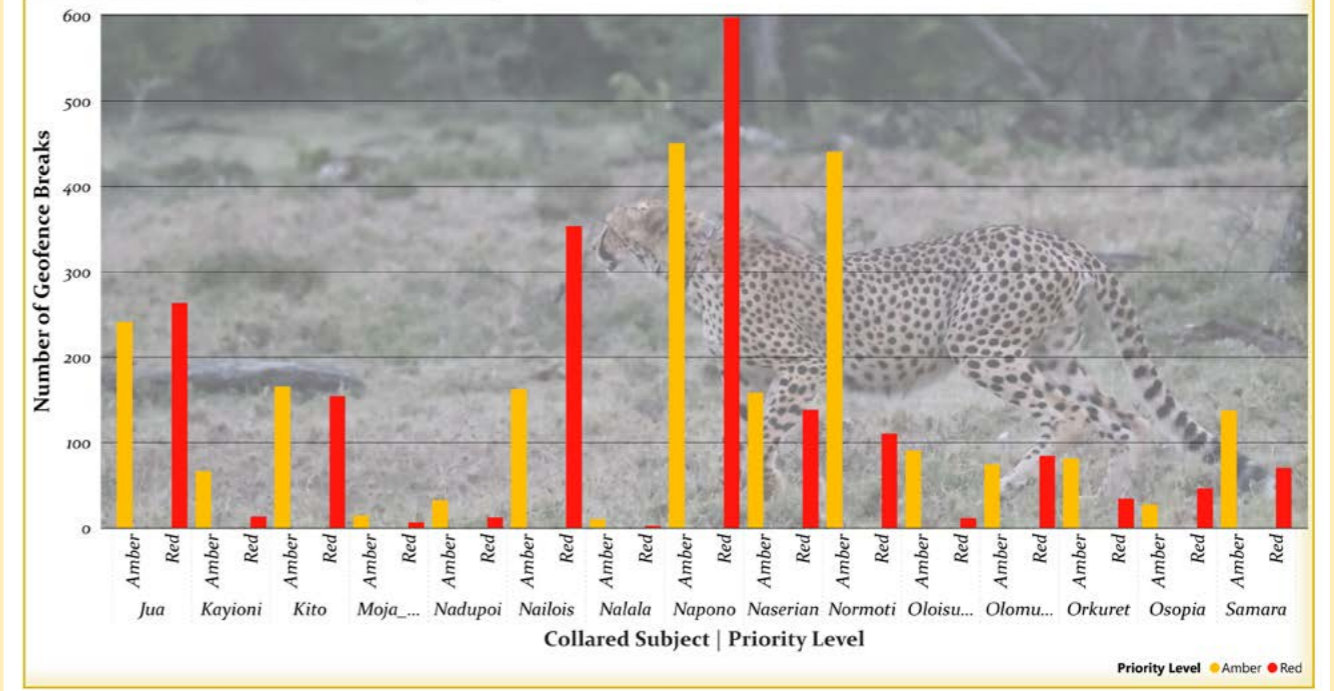


Figure 13: illustrates geofence breaks alerts and response, which are generated when collared predator cross designated virtual boundaries. These alerts are automatically assigned to nearby Lion Ambassadors, enabling them to promptly inform local communities about the presence of predators in community areas.

The chart shows the distribution of geofence breach alerts across two priority levels: red alerts, which indicate higher risk in areas closest to communities, and amber alerts, representing lower priority zones located approximately 1 km beyond the red geofence.

In total, Lion Ambassadors successfully responded to 4,042 alerts. This proactive mitigation approach helps prevent livestock depredation before it occurs and strengthens coexistence between people and predators within community landscapes.

Lion Ambassadors Community Outreach

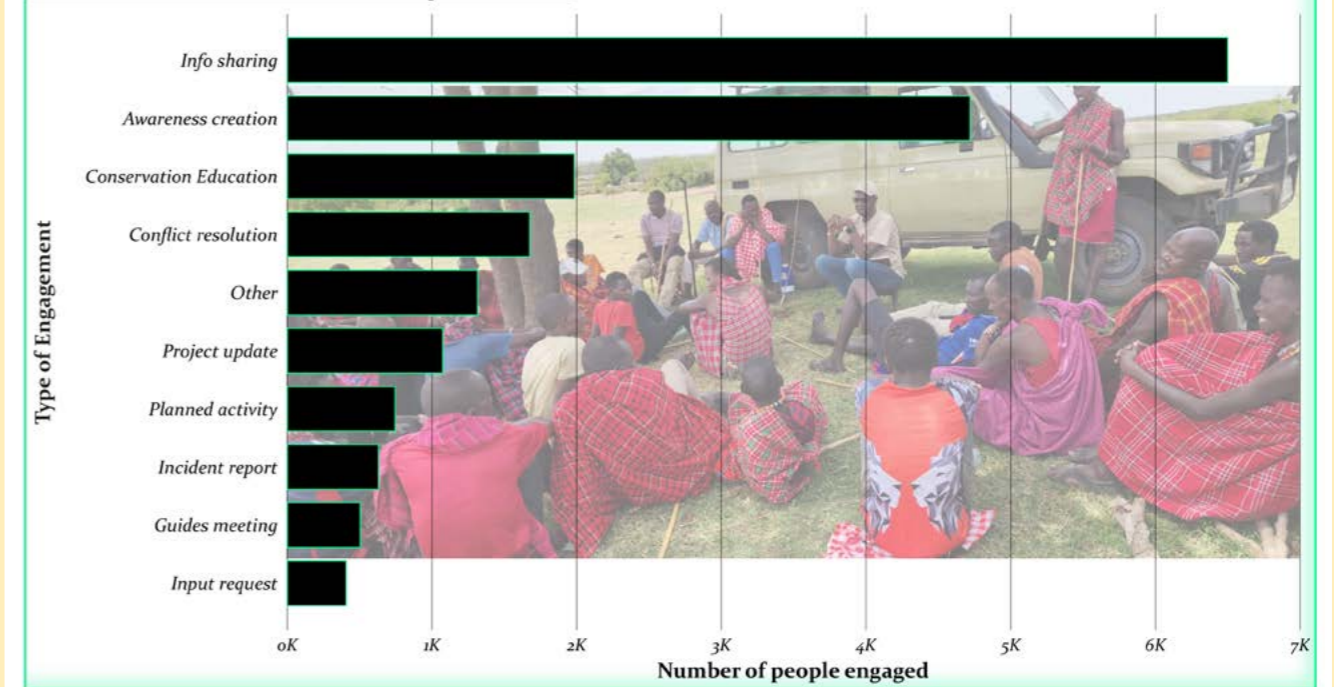


Figure 14: Lion Ambassadors grassroots conservation engagement.



Lion Ambassadors maintained strong grassroots conservation engagement as a long-term strategy for coexistence and sustainability. By raising awareness, addressing conflicts, delivering conservation education, and sharing critical information, they connected with **over 19,000 community members in 2025**.

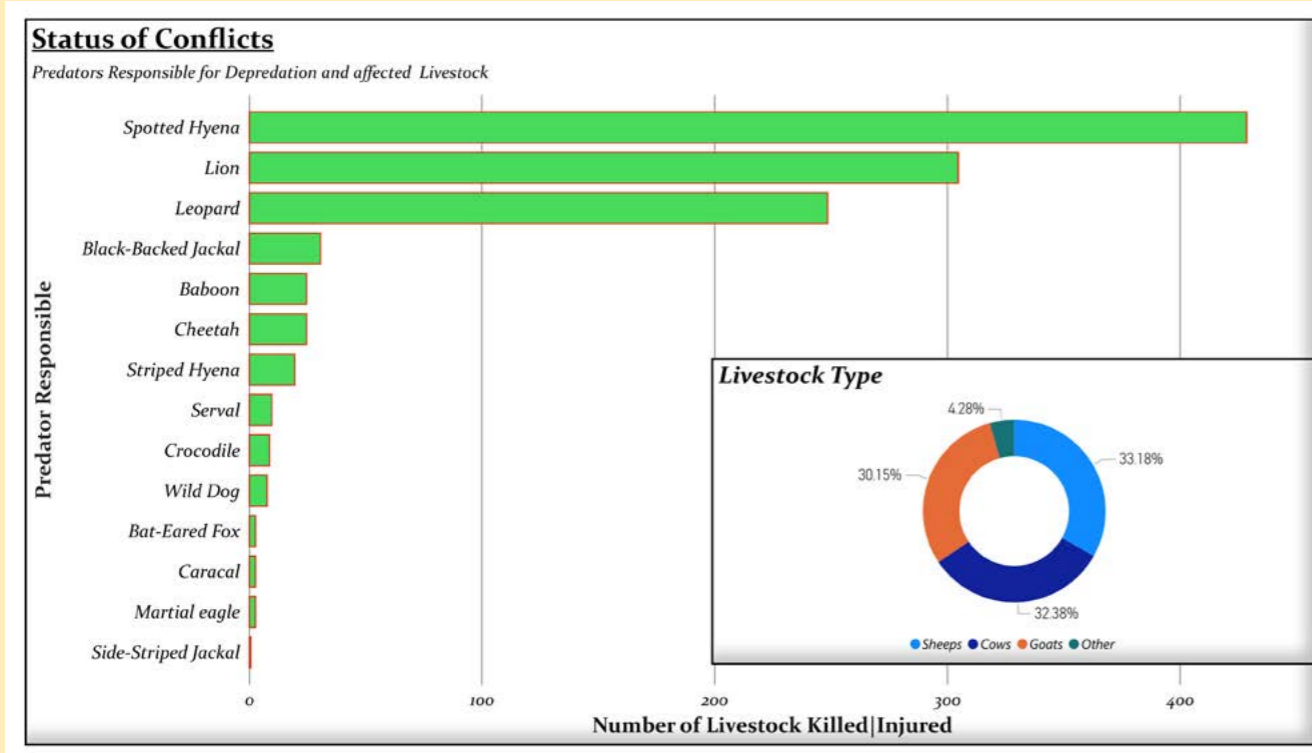


Figure 15: illustrates the trends in human-wildlife conflict across the Mara landscape over recent years, showing that conflict levels have fluctuated over time. Compared to previous years, hyenas continue to be the most problematic predator, followed by lions and then leopards, which together account for the highest number of livestock losses.

Shoats are the most affected livestock category, with sheep accounting for 33.18% and goats 30.15% of reported losses. Cattle are also significantly impacted, representing 32.38% of losses. Predation on shoats is predominantly associated with hyenas, leopards, and cheetahs, while the majority of cattle losses are primarily attributed to lions.

Lion Ambassadors Capacity building & equipping

To strengthen and support our Lion Ambassadors, we conducted six capacity-building training sessions to provide updates, share knowledge, and review ongoing activities.

These sessions not only created an opportunity for us to engage directly with the ambassadors but also offered them a platform to share the challenges they encounter in their day-to-day work. In addition, we supplied the ambassadors with essential equipment, including new boots, raincoats, T-shirts, and phones for some of them.

Overall, this support was aimed at easing their work and enhancing their effectiveness in carrying out their responsibilities.



6
Capacity-building sessions for Lion Ambassadors delivered on critical predator-related matters.

Anti-Poison Campaigns

In response to the escalating threat of wildlife poisoning across the Greater Mara Ecosystem, the Mara Predator Conservation Programme (MPCP) implemented targeted community awareness campaigns to address the root causes and impacts of poisoning.

These campaigns were designed to increase understanding of the ecological, economic, and public health consequences of poisoning — not only for wildlife, but also for livestock, human wellbeing, and the broader ecosystem that sustains community livelihoods.

A distinctive feature of these campaigns was the strategic involvement of the Buffalo Dancers, who used music, storytelling, and culturally grounded performances to communicate conservation messages in an engaging and accessible manner.

By translating complex scientific concepts into culturally resonant narratives, the performances strengthened community understanding and fostered emotional connection to the anti-poison message. This approach effectively bridged the gap between conservation science and everyday lived experiences, ensuring broad reach across diverse age groups and social segments.

A total of seven campaigns were conducted in



A skit by buffalo dancers during the campaign.



Buffalo dancers performing during the Anti-Poison Campaign in Aitong Center.

Aitong, Mararienta, Ngosvani, Lemek, Sekenani, Ewaso Ngiro, and Oloolaimutia, reaching more than **33,300 community members**. Beyond awareness creation, these gatherings provided platforms for dialogue, reflection, and collective responsibility.

Through culturally relevant engagement and inclusive participation, MPCP continues to strengthen community stewardship, promote human-wildlife coexistence, and safeguard the ecological integrity of the Mara landscape for future generations.

33,300

Community members reached through our antipoison campaigns in seven locations.

Poison response community barazas

In March and April, the Mara Predator Conservation Programme (MPCP), in collaboration with Nature Kenya and the Kenya Wildlife Service (KWS), conducted a series of community barazas (sensitization meetings) across seven villages situated near recent wildlife poisoning incidents. These engagements were designed to address the fear, frustration, and misinformation that often drive retaliatory poisoning, while fostering open dialogue on practical pathways toward coexistence.

Through structured presentations and candid discussions, we engaged directly with community members living alongside large carnivores, exploring strategies to protect predator populations while safeguarding the health and integrity of the broader ecosystem. The barazas reached a total of 845 participants (580 men and 265 women), demonstrating strong community interest and representation.



KWS Narok Assistant Director Stephen Kuseren addressing community members at a Baraza in Olderkesi

Together with KWS officers and respected local elders, discussions emphasized the ecological balance of the Mara landscape and highlighted the far-reaching consequences of wildlife poisoning — not only for predators and scavengers, but also for livestock, human health, and ecosystem services. The sessions fostered meaningful dialogue and strengthened local resolve to reduce retaliatory killings and promote sustainable coexistence.

For MPCP, these engagements go beyond awareness creation. They represent a critical investment in community stewardship, empowering local people as custodians of their landscapes and advancing a shared vision where both people and predators can thrive.



KWS Assistant Director, Stephen Kuseren addressing the participants at a baraza in Mararianta.



845

Participants engaged in the barazas representing **580** men and **265** women.

Recycled Plastic Pole Bomas

The Greater Mara Ecosystem is a shared landscape where people, livestock, and wildlife coexist in close proximity, often utilizing the same spaces at different times of day. Livestock graze within or adjacent to critical wildlife habitats during daylight hours, while predators and livestock frequently occupy overlapping areas at night, significantly increasing the risk of conflict. Traditional livestock enclosures (bomas), particularly those in poor structural condition, remain highly vulnerable to predator incursions. Resulting livestock losses impose substantial economic burdens on households and heighten tensions between communities and wildlife, undermining long-term coexistence efforts.



One of the traditional bomas targeted for reinforcement at Olesere

In the current reporting period, MPCP prioritized households in **Olesere** and **Enchorro Osidan** along the **Naboisho–Pardamat** corridor, a critical wildlife movement route that has experienced persistently high livestock losses. Strengthening bomas in these high-risk areas was essential not only to protect community livelihoods but also to prevent retaliatory predator killings, thereby reinforcing peaceful human–wildlife coexistence within this important conservation landscape.

As a result of this intervention, five predator-proof bomas were constructed, collectively securing more than 550 cattle. These reinforced enclosures have substantially improved livestock protection, reduced vulnerability to nocturnal predation, and strengthened community confidence in practical coexistence solutions. By safeguarding household assets, the initiative directly supports livelihood resilience while reinforcing conservation objectives.

To address this challenge, the Mara Predator Conservation Programme (MPCP) has partnered with local communities to upgrade vulnerable livestock enclosures. Traditional bomas are being replaced with durable, eco-friendly structures constructed using recycled plastic poles and triple-twisted chain-link fencing.

These reinforced enclosures significantly reduce nighttime livestock predation while promoting environmental sustainability by minimizing tree cutting and repurposing plastic waste. The intervention also contributes to broader climate change mitigation efforts through reduced deforestation and improved resource efficiency.



The newly constructed predator proof Boma for Mzee Mpooya of Olesere

The intervention is expected to contribute to a measurable reduction in retaliatory predator killings, promote more positive community attitudes toward carnivore conservation, and encourage wider adoption of climate-smart, sustainable practices that benefit both local communities and wildlife across the Greater Mara Ecosystem.

Mara Herder's training

During the reporting period, the Mara Predator Conservation Programme (MPCP) intensified efforts to mitigate human-wildlife conflict through targeted coexistence and herder training programmes across the Maasai Mara ecosystem.

These interventions addressed escalating challenges in key wildlife corridors, where close interaction between livestock and predators frequently results in economic losses and retaliatory killings.

Initial trainings were conducted in Nkineji, Oloolaimutia, and Ositeti villages, engaging 40 herders, and were subsequently expanded in May and June 2025 to reach a total of 302 herders across multiple conservancies.

Facilitated by conservancy rangers, Lion Ambassadors, and respected local elders, the sessions covered predator population status and trends, ecological roles, species identification, prevailing threats, and relevant legal frameworks under the **Wildlife Conservation and Management Act (2013)**.

Practical, low-cost livestock protection strategies were emphasized, alongside strengthening herder vigilance and revitalizing



Herders Training session at Mara North Conservancy.

traditional Maasai herding knowledge. The programme positioned coexistence as a shared responsibility between communities and conservation stakeholders.

Beyond knowledge transfer, the trainings have contributed to tangible behavioural shifts. Participating herders adopted improved livestock management practices, reducing vulnerability to predation and lowering the risk of retaliatory killings.

Enhanced understanding of predator behaviour, the risks associated with poisoning, and the long-term ecological and livelihood benefits of conservation has strengthened community ownership of coexistence efforts.

By reinforcing collaboration between herders, elders, and conservation practitioners, the initiative has helped rebuild trust, revive cultural stewardship practices, and promote sustained ecosystem resilience within the Greater Mara landscape.



MPCP Community Outreach Officer engaging with livestock herders at Kipaipaya Village.



Dominic Sakat distributing lion lights to a community member



360 Lion Lights

distributed to affected herders.

Predator Deterrent Lights

As part of its human-wildlife coexistence strategy, the Mara Predator Conservation Programme (MPCP) expanded the installation of lion lights - solar-powered predator deterrent systems designed to reduce nighttime livestock attacks. Nighttime predation remains one of the most significant drivers of economic loss and retaliatory killings in the Mara landscape.

In August, MPCP partnered with local communities to install more than 80 lion lights across three high-conflict areas: **Olkurroto, Oloonkolin, and Kipaipaya**.

The participatory implementation approach ensured that beneficiary households were actively engaged in installation, maintenance, and long-term ownership of the intervention.

The installations now provide enhanced protection for more than 2,000 livestock, significantly reducing vulnerability to nocturnal predation and improving household security. By offering an effective, non-lethal conflict mitigation solution, lion lights help decrease retaliatory responses against predators while safeguarding community livelihoods.

This intervention contributes to strengthened coexistence, improved tolerance toward carnivores, and the long-term conservation of predator populations within a resilient Greater Mara ecosystem.



MPCP's Community liaison officer installs one of the lion lights in a boma

Conservation Education

As part of its long-term commitment to promoting **coexistence** between people and predators, the Mara Predator Conservation Programme (MPCP) engages with **primary** and **secondary** schools across the Mara ecosystem. Through wildlife clubs, the program promotes **conservation awareness**, inspiring the next generation of environmental stewards.

To ensure structured and impactful engagement, MPCP develops annual work plans for these clubs, guiding the **implementation of conservation-focused** activities. Here are the activities undertaken during this reporting period



262 learners (**167 boys** and **93 girls**) taken for game drives.



16 students (**8 boys** and **8 girls**) attended Twende Porini.



OVER 600 learners (from **15 schools**) and community members attended the 2025 Open Day.



Drama showcase by wildlife club members 2025 Open Day © Felixie Kip'

World Wildlife Day Celebration

During the reporting period, the Mara Predator Conservation Programme (MPCP) implemented experiential, creative, and community-based conservation activities to strengthen environmental awareness and stewardship among students and surrounding communities. World Wildlife Day was commemorated at Nashulai Community Conservancy in collaboration with the Kenya Wildlife Service (KWS) and other stakeholders, facilitating the participation of 50 students from Irbaan Schools.

In addition, more than 350 Wildlife Club members from six schools actively participated in World Environment Day 2025 celebrations. These engagements strengthened partnerships between schools, conservation organizations, and government agencies, while fostering environmental responsibility and youth leadership in conservation across the Greater Mara landscape.



Stakeholders engagement during World Environment Day celebration



350 wildlife club members from **6** schools participated in World Environment Day



Annual Field Visit

Wildlife Club members engaged in experiential learning through annual field visits, educational tours to the Centre for Ecosystem Restoration Kenya (CERK), and game drives during the wildebeest migration in the Maasai Mara National Reserve.

These activities reached 296 students, including 34 learners from Margaret Kenyatta Primary School and 262 students from six schools, resulting in improved understanding of biodiversity, ecosystem interdependence, and conservation challenges.



Wildlife club members during field trips to conservation areas

Environmental Clean-Up Initiatives



Wildlife club members from Margaret Kenyatta Olkurroto during clean-ups

MPCP's wildlife club students led school and community-based environmental clean-up campaigns, including stream restoration activities within Olare Motorogi Conservancy. These initiatives contributed to improved sanitation in school and community environments, enhanced water quality in streams feeding into the Mara River, and strengthened youth-led conservation action.

By positioning students as environmental champions, the activities fostered greater community participation and reinforced a culture of shared responsibility for ecosystem health.

Nature-Themed Art for Conservation Awareness

In 2025, innovative conservation approaches were advanced through nature-inspired art initiatives. Activities included World Giraffe Day celebrations, science-art programs implemented across five schools, and public exhibitions showcasing student artwork.

These efforts not only fostered creativity and environmental awareness among students but also engaged over 200 community members, enhancing their understanding of biodiversity and ecosystem dynamics.



Artwork from wildlife club members during World Giraffe Day celebration

School Kitchen Garden Project

To mitigate human-wildlife conflict, a chilli kitchen garden was established at Irbaan School in Talek, complemented by hands-on training in sustainable agriculture and wildlife deterrence techniques.

This initiative successfully reduced elephant incursions, enhanced safety for students and staff, and generated income to support ongoing Wildlife Club activities.



Wildlife club members from Irbaan school attending a Kitchen garden in their school.

Wildlife Club's Open Day

The Wildlife Club Open Day is an interactive event for Wildlife Club members coordinated by the Mara Predator Conservation Programme. During the event, members showcase a variety of conservation-focused activities and projects.

Traditionally held in the final quarter of the year, this year's Open Day engaged over 500 participants, who presented conservation-themed poems, dances, dramas, and plays. The event not only entertained audiences but also served as a dynamic platform for raising environmental awareness and promoting conservation education.



Attendees and performances during the 2025 Annual wildlife clubs open day



ASILIA "Twende Porini" Conservation Experience

Additional immersive learning opportunities were offered through the ASILIA Twende Porini conservation program and a conservation-focused holiday art bootcamp.

Sixteen students from four schools participated in the Twende Porini experience, while 48 students from five schools attended the August bootcamp. These programs fostered participants' conservation knowledge, confidence, leadership skills, and a lasting commitment to environmental stewardship.



Twende Porini attendees doing artwork



© Governors' Camp

2025 Community Survey

Between August and November 2025, MPCP Lion Ambassadors conducted 384 interviews across the Greater Mara community (Figure 16.0). This study aimed to track how attitudes toward carnivores have evolved since our 2021 survey and to establish a baseline for new community areas.

Beyond attitudes, we also evaluated landscape-level threats, including the rapid spread of fencing, recent carnivore sightings, and the prevalence of wildlife poisoning.

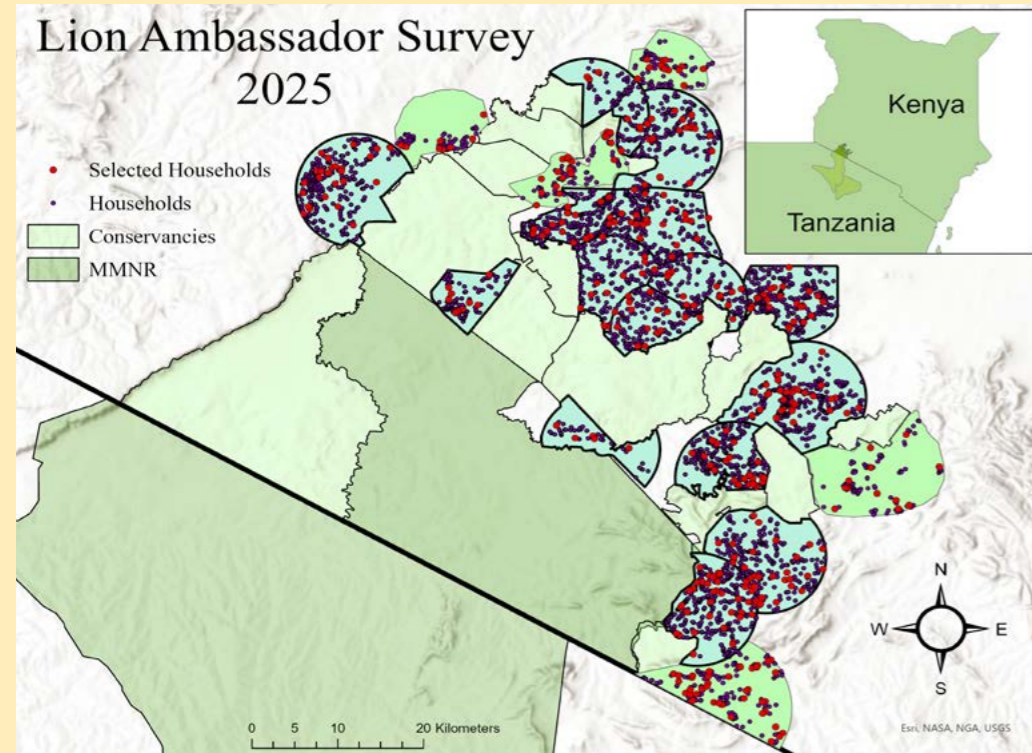


Figure 16: Interview locations for MPCP's 2025 lion ambassador survey.

Species Attitudes: We measured attitudes towards lions, cheetahs, leopards, African wild dogs, and spotted hyenas on a scale from +16 (highly positive attitudes) to -16 (highly negative attitudes). Cheetahs received the highest average score, followed by African wild dogs, lions, and leopards. Spotted hyenas were the only species to receive a negative score.

Since 2021, attitudes toward four of five species showed slight improvement, with the most significant gains seen for cheetahs and lions. Leopards were the only species to see a slight decline in average attitude scores (Table xx).

Mean Attitude Scores Among All Respondents			
	2021 Survey (n = 283)	2025 Survey (n = 384)	Change in Mean Attitude Score
Lion	-0.34	0.15	+ 0.49
Cheetah	1.16	1.70	+ 0.54
Leopard	0.50	0.15	- 0.35
African Wild Dog	0.04	0.35	+ 0.31
Spotted Hyena	-2.96	-2.68	+ 0.28

Attitudes are generally more positive in the Pardamant Conservation Area and the corridors between Olare Motorogi and Mara North Conservancies. Conversely, attitudes are more negative near Talek and to the east of the National Reserve and Olorro North, Ripoi, and Olderkesi Conservancies (Figure 17.0).

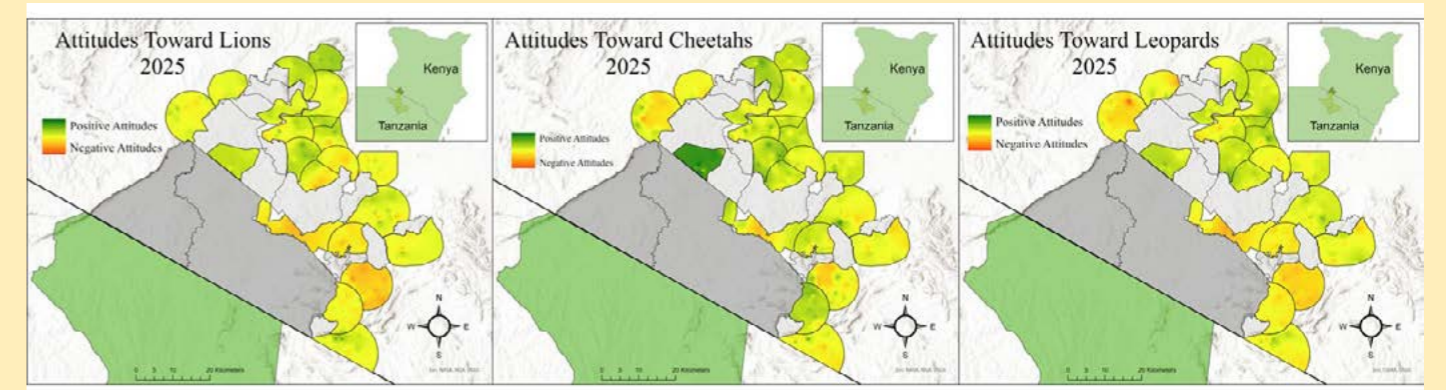


Figure 17: Distribution of attitudes toward lions (left), cheetahs (center), and leopards (right).

Fencing: Fencing outside of wildlife conservancies represents a major conservation challenge for carnivores. Our data shows a staggering trend: 60% of respondents have already fenced their land, and over 90% of those who haven't yet done so intend to in the near future (Figure 18.0).

This result highlights an immediate risk of reduced prey populations in community lands, potentially increasing livestock predation or excluding carnivores from these areas altogether.

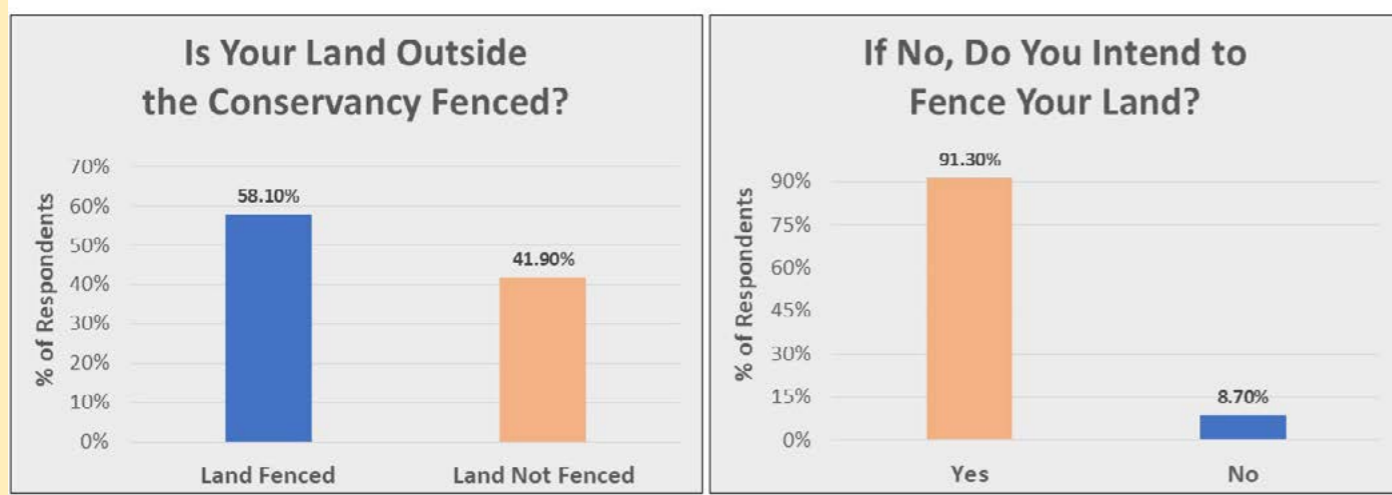


Figure 18: Proportion of respondents with fenced land outside of wildlife conservancies (left) and intention to fence land outside of wildlife conservancies (right).

The primary driver for fencing was grazing competition. Nearly half of respondents fenced their land to protect pasture from other people's livestock (Figure 19.0). Other notable motivations include securing land ownership, protecting pasture from wildlife, and reducing predation.

Despite this result, 75% of respondents expressed a willingness to remove fences in exchange for financial incentives, such as compensation for livestock loss or increased lease fees. This suggests that economic strategies are the most effective tool for maintaining open habitat.

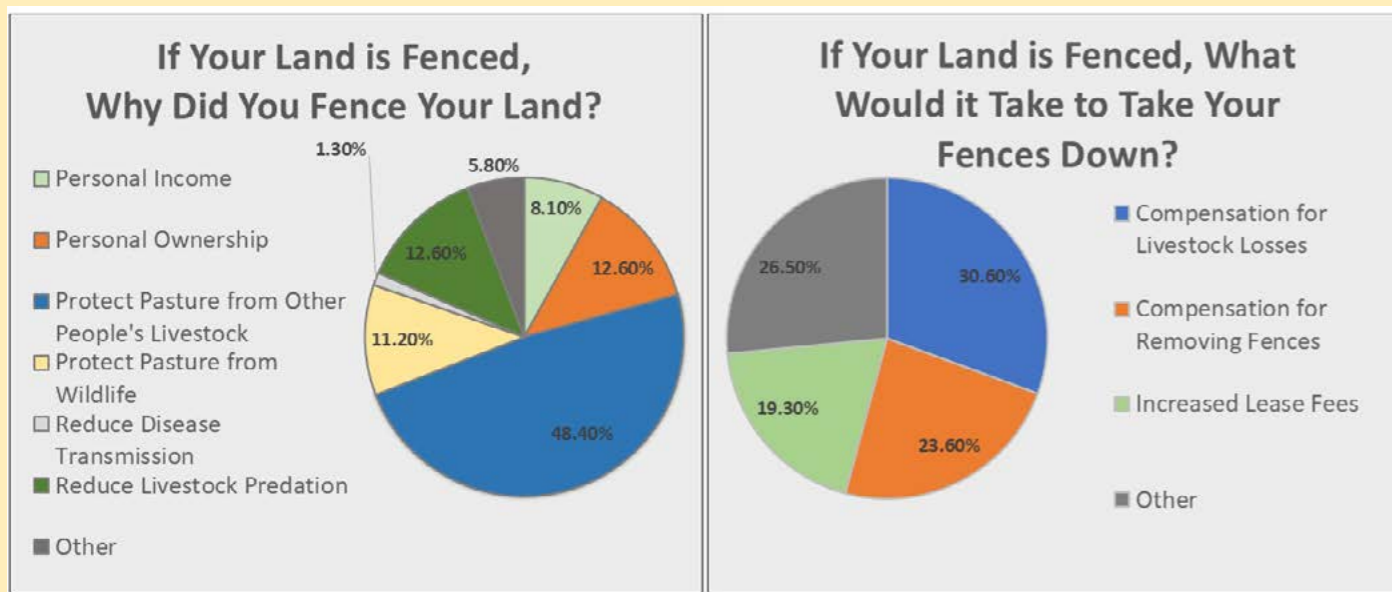


Figure 19: Reported reasons for fencing land outside of wildlife conservancies and what it would take for respondents to remove fences.

Carnivore Sightings: To track predator activity in community zones, we asked residents when they last sighted specific species. Most respondents reported sighting a lion within the last week. Cheetahs and leopards are seen less frequently, with most sightings occurring within the last six months.

Cheetah sightings were notably more frequent in the corridors between Ol Kinyei and Olarro North, as well as the region north of Ol Kinyei (Figure 20.0). Conversely, sightings of all cats were significantly lower in the eastern zones, suggesting lower prevalence in those areas.

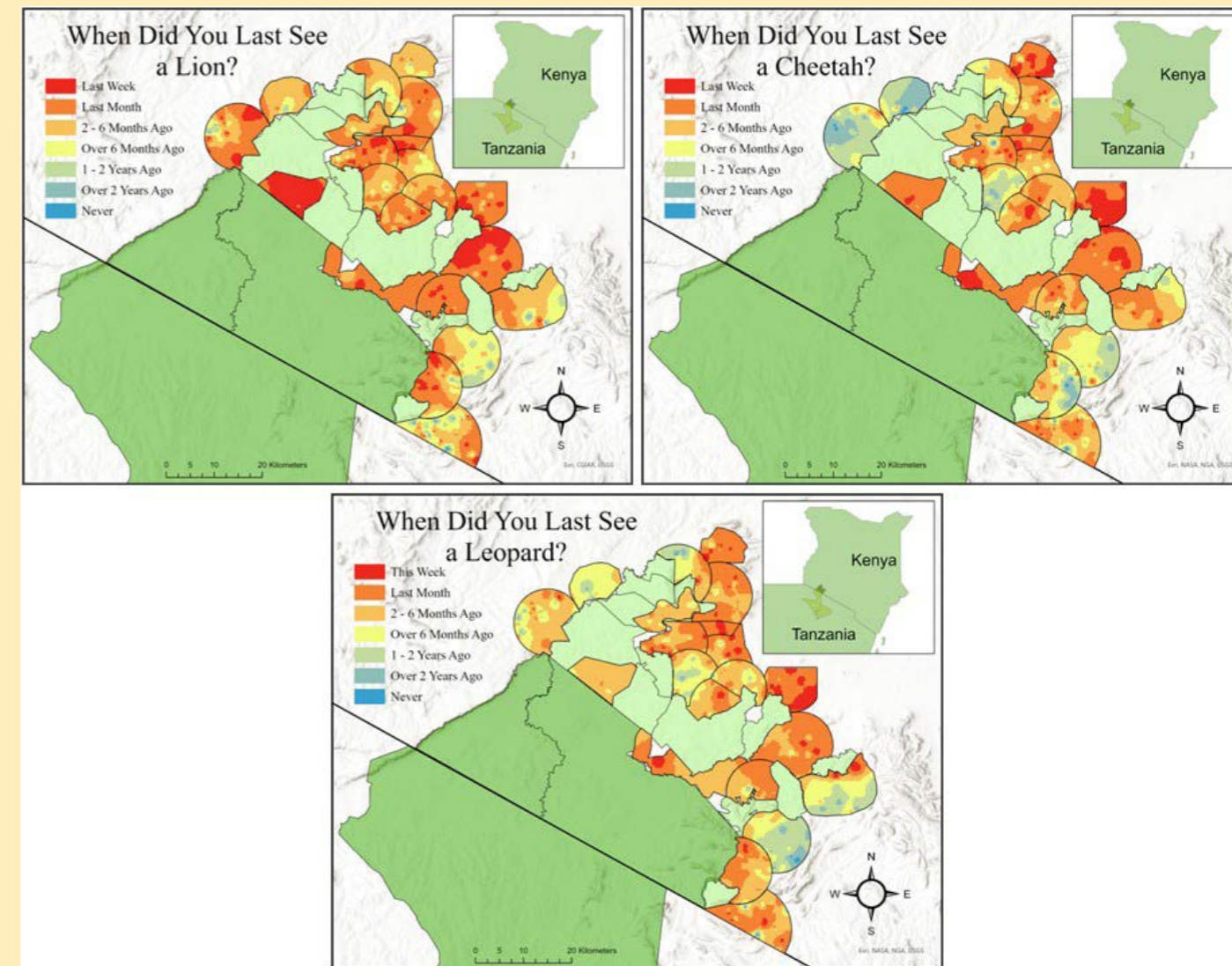


Figure 20: Distribution of reported lion (top left), cheetah (top right), and leopard sightings (bottom middle).

Poisoning Events: While most respondents haven't heard of a poisoning event in over two years, our spatial analysis identified "high-risk" zones where incidents are much more recent (figure 21.0). Several reports emerged from the western side of Mara North and the corridor between the National Reserve and the Olare Motorogi/Mara North Conservancies, with some events occurring just weeks before our interviews.

These findings will directly inform our 2026 anti-poisoning campaigns, allowing us to deploy education and rapid-response teams to the areas where they are needed most.

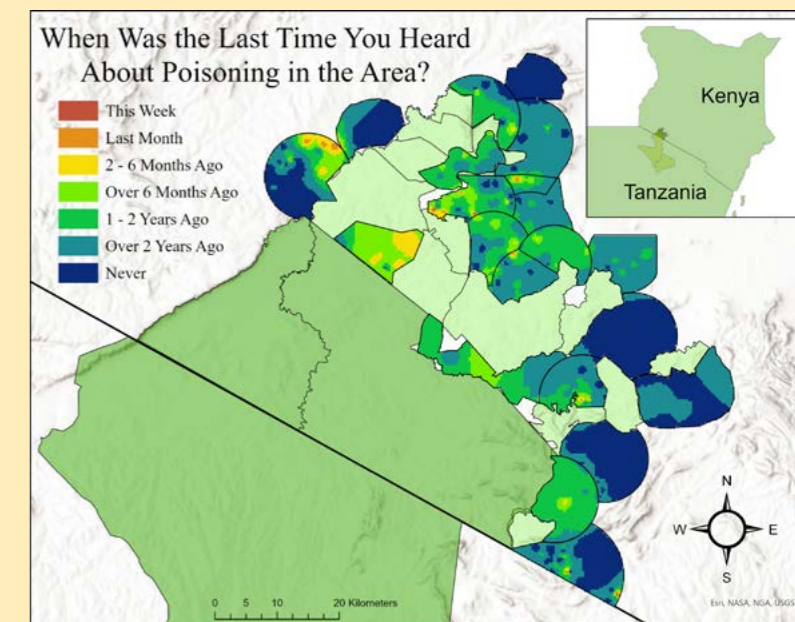


Figure 21: Prevalence and distribution of reported poisoning events.



PEOPLE

EDUCATION

KWT recognises that it is imperative to the protection of Kenya's wildlife that more Kenyans are given the opportunity to attain good wildlife or conservation-based education.



20

beneficiaries graduating with a Diploma from WRTI

2

cohorts of beneficiaries

studying Diplomas in Environmental Management and Wildlife Management



Conservation Leadership Programme

A journey into conservation leadership from the classroom to the field

The Conservation Leadership Program marked a defining milestone this year with the successful completion of industrial attachments by two cohorts of beneficiaries, totalling 20 young conservationists. This is the largest number the program has supported at one time, representing a remarkable increase compared to the previous cohort, which included only 2 beneficiaries.

As these 20 youth prepare for graduation in March 2026, their journey reflects both academic success and the transformative power of partnerships in shaping Kenya's next generation of conservation leaders.



Industrial attachment is a core pillar of the coursework at **Wildlife Research and Training Institute**, where they studied. It provides trainees with the opportunity to apply theory in real-world conservation settings. Over three months, beneficiaries were placed across Kenya's conservation landscape, gaining hands-on experience in wildlife management, environmental assessment, community conservation, research, governance, and policy implementation.

Host institutions included **Amboseli National Park, Tsavo East National Park, Samburu National Reserve, Eselenkei Conservancy, Ol Kinyei Conservancy, Mount Kenya Conservancy, Reteti Elephant Sanctuary, Grevy's Zebra Trust, Big Life Foundation, African Conservation Centre, NEMA Naivasha Sub-County** and the **Naivasha Sub-County Department of Environment, Energy, Natural Resources & Climate Change**.

Presentation topics and key takeaways

At the conclusion of their attachments, they delivered presentations highlighting the knowledge and skills acquired during their placements.

The topics addressed some of Kenya's most pressing conservation challenges with key insights including:

Human-Wildlife Conflict

Assessments in Samburu, Selenkay and Amboseli landscapes highlighted the socio-economic impacts of human-predator conflict. Trainees emphasized the importance of community awareness, predator-proof enclosures and coexistence strategies to protect both livelihoods and wildlife.

Invasive Species and Habitat Degradation

Studies on *Prosopis juliflora* and *Tarchonanthus camphoratus* (Leleshwa) revealed negative impacts on rangelands, biodiversity and wildlife habitats. Recommendations included community-led removal, selective clearing, restoration of native vegetation and sustainable land management practices.

Wildlife Distribution and Movement

Research on elephants, Grevy's zebra, giraffes, raptors and herbivores demonstrated how land-use change, fencing and human activity disrupt wildlife movement and habitat use. Protecting corridors, critical habitats and reducing disturbances were identified as essential strategies.



L: Yvonne at Reteti sanctuary for her industrial attachment R: Florence at Grevy Zebra Trust

Community Engagement in Conservation

Several presentations highlighted the role of local communities in successful conservation outcomes.

Strong benefit-sharing mechanisms, inclusive governance, conservation education and community-based initiatives were shown to improve biodiversity protection and long-term stewardship.



Natural Resource Management and Sustainability

Topics on woody vegetation dynamics, water resource management and domestic energy use highlighted the interconnectedness of environmental sustainability, gender roles and livelihoods.

Promoting cleaner energy alternatives and empowering women in resource governance emerged as key priorities.

All the beneficiaries come from rural landscapes where conservation is not merely an academic discipline but a lived reality who now understand both ecological systems and community realities.

Outcomes and looking ahead

The impact of the industrial attachment phase is already visible. Some beneficiaries have secured employment within the conservation sector, others are actively developing independent conservation projects while some continue to seek opportunities. Though their journeys differ, all have gained practical skills, confidence and professional networks that position them for future success. For those still searching, hope remains strong that what lies ahead will build on the foundation laid during this transformative experience.



We extend our sincere gratitude to all host organizations that opened their doors to mentor and guide these youth, reaffirming the belief that it truly takes a village to raise up Kenya's next generation of conservationists.

We also express our deepest appreciation to Great Plains Foundation and I&M Foundation whose generous support made this journey possible and whose belief in the mission continues to shape lasting impact.

As we celebrate the completion of industrial attachments by two cohorts, we do so with pride and optimism. These 20 emerging leaders are ready not only for graduation in March 2026, but for the responsibility of safeguarding Kenya's natural heritage for generations to come.



Impact in Numbers



7 beneficiaries graduating with a **Diploma in Environmental Management**



13 beneficiaries graduating with a **Diploma in Wildlife Management**



1 beneficiary working on **independent research projects.**



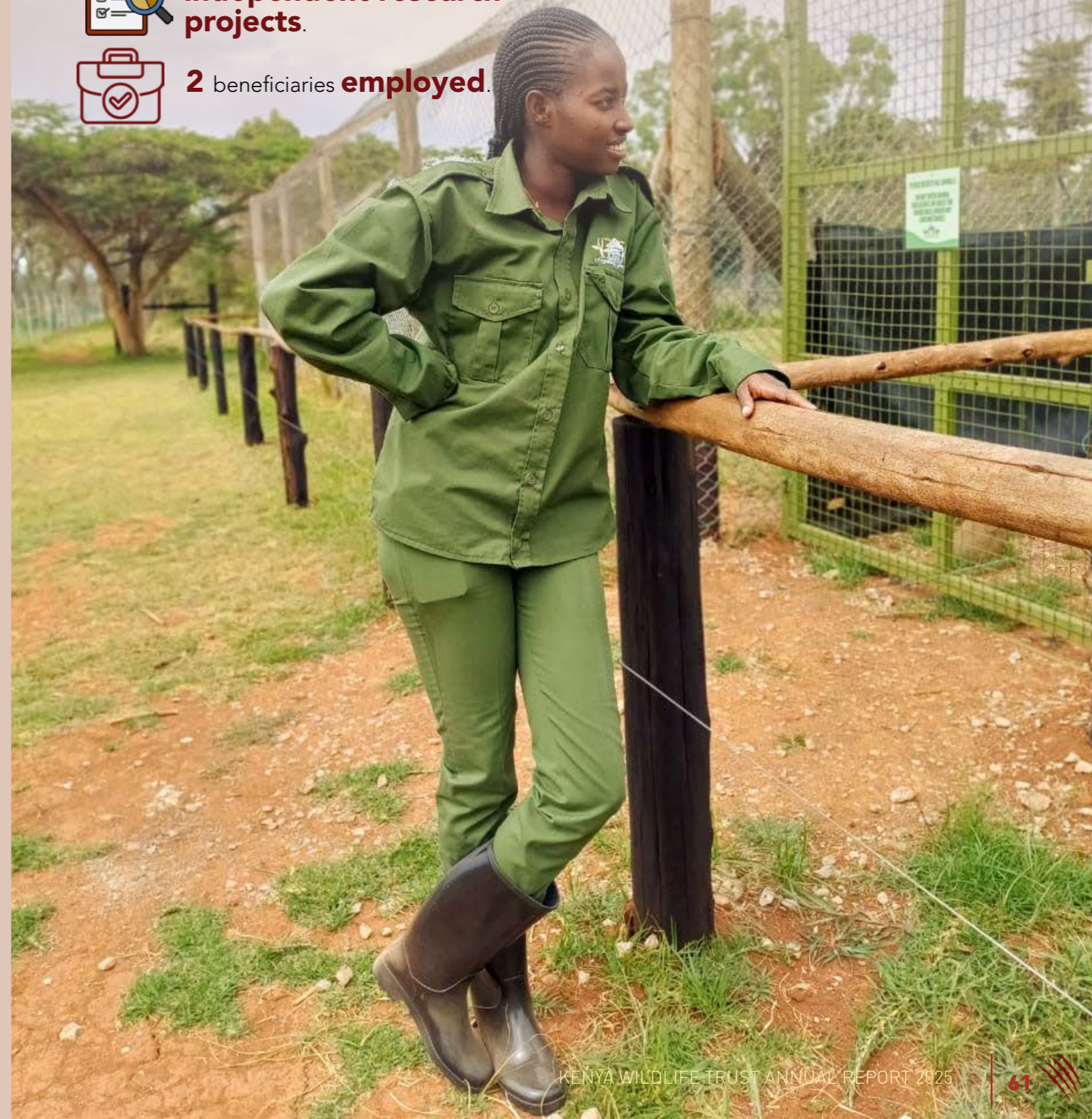
2 beneficiaries **employed.**



4 beneficiaries **on internship.**

1 beneficiary who is **self employed.**

9 beneficiaries **looking for work.**



Scholar Spotlight

From the Maasai Mara to the Global Stage

As part of Kenya Wildlife Trust's (KWT) mission, a commitment to promoting a new generation of homegrown conservation leaders. There is no greater testament to the long-term impact of this investment than the journey of Brian Leshan Kaelo.

Brian's path from the Maasai Mara to prestigious universities worldwide showcases how targeted academic sponsorship, hands-on field mentorship, and international pathways can amplify local talent and create global conservation impact. Brian's journey began through KWT's Conservation Leadership Programme, which provided a sponsorship for him to pursue a Diploma in Wildlife Management at the Wildlife Research and Training Institute (WRTI) in Naivasha.

WORKING IN THE MARA DEEPENED MY PASSION FOR PREDATOR RESEARCH. IT GAVE ME HANDS-ON, INVALUABLE FIELD ECOLOGY SKILLS THAT LAID THE FOUNDATION FOR EVERYTHING I WOULD STUDY NEXT.

BRIAN LESHAN KAELO, CLP ALUMNUS



Backed by KWT's endorsement, Brian was accepted to Catawba College in the United States, where he pursued a Bachelor of Science in Environment and Sustainability, with minors in Geographic Information Systems (GIS) and Ecology.

While studying abroad, Brian remained connected to KWT. He designed a research project investigating the real-world efficacy of predator deterrent lights ("lion lights") - a pioneering local innovation by Richard Turere. Using foundational data from KWT's Monitoring and Evaluation team, Brian conducted field surveys and returned his findings to enrich KWT's conservation database.

His research earned accolades on the international stage:

- **International Congress for Conservation Biology (ICCB 2023)** in Kigali, Rwanda: Presented findings on human-wildlife coexistence.
- **Student Conference on Conservation Science (SCCS)** in New York: Awarded an Honourable Mention for his research presentation.

In May 2025, Brian celebrated a monumental milestone, graduating from Catawba College with a **Bachelor of Science degree, earning Cum Laude honors.**

In August 2025, Brian relocated to Winston-Salem, North Carolina, to begin his **Master's in Biology at Wake Forest University.** His research path remains focused on developing sustainable, evidence-based solutions that allow human communities and Africa's large predators to thrive side-by-side.

Brian's success story highlights the importance of KWT's educational pipelines. We are cultivating the future scientists, and decision-makers of African conservation by supporting local scholars.



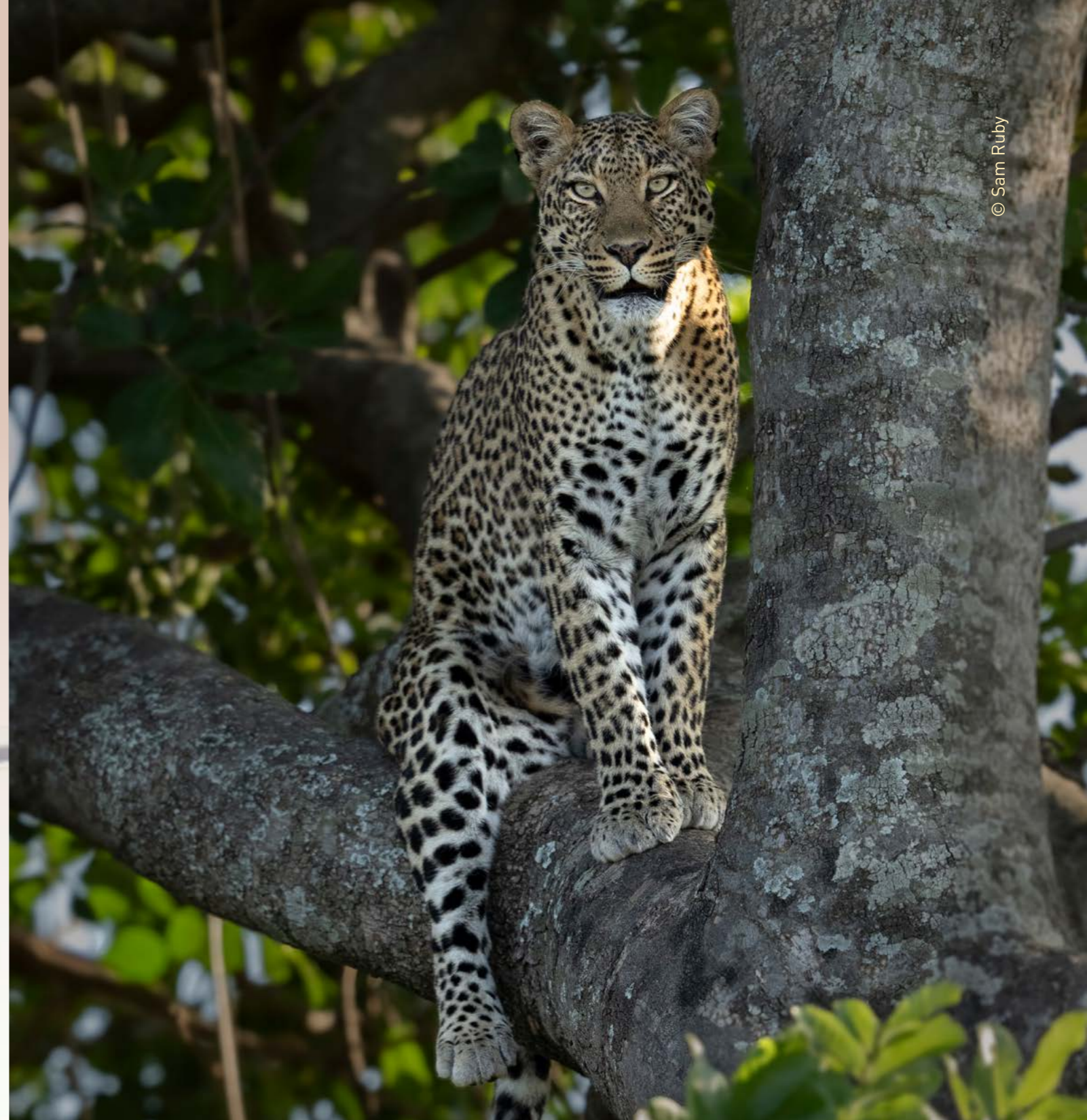
Scholar Profile Key Milestones

- **WRTI DIPLOMA SPONSORSHIP:** FUNDED BY KWT'S CONSERVATION LEADERSHIP PROGRAMME.
- **FIELD LEADERSHIP:** 3 YEARS AS A RESEARCH ASSISTANT WITH THE MARA PREDATOR CONSERVATION PROGRAMME (MPCP).
- **B.SC. ENVIRONMENTAL & SUSTAINABILITY (CUM LAUDE, MAY 2025):** COMPLETED AT CATAWBA COLLEGE, USA.
- **MASTER OF SCIENCE IN BIOLOGY (COMMENCED AUGUST 2025):** AT WAKE FOREST UNIVERSITY, USA.

“
AMONG THE 21 STUDENTS SPONSORED BY KENYA WILDLIFE TRUST (KWT), WE ARE HAPPY AND GRATEFUL THAT THROUGH THEIR SUPPORT FINANCIALLY THEY ARE ABLE TO ACCOMPLISH THEIR ACADEMIC JOURNEY. I WANT TO APPRECIATE KWT FOR WHAT THEY HAVE DONE FOR THE STUDENTS WHERE THEY CAME FROM.

MOST OF THE STUDENTS CAME BEING STUDENTS WHO DID NOT KNOW THEMSELVES, BUT OVER THE YEARS, THROUGH THE PROGRAM, WE HAVE DEVELOPED THEIR SKILLS TO A LEVEL WHERE WE HAVE SOME OF THEM JOINING THE STUDENT GOVERNING COUNCIL. THAT IS A GREAT ACHIEVEMENT.

EVA MALEL – WILDLIFE RESEARCH AND TRAINING INSTITUTE (WRTI) SCHOOL REGISTRAR & LECTURER

”

© Sam Ruby

“
Sustainable coexistence with predators is only possible when everyone takes responsibility for protecting their livestock, by building strong enclosures and practicing proper herding.

Let's not take our anger out on wildlife, they don't understand the challenges we're going through. Compensation alone is not a sustainable solution.

Ole Kileteny, Naboisho

”



UFUGAJI HIFADHI

The KWT livelihoods programme is centered on equitable and financially inclusive digital ecosystems to alleviate the impacts of climate change and socio-economic challenges on rural indigenous communities residing in wildlife areas.

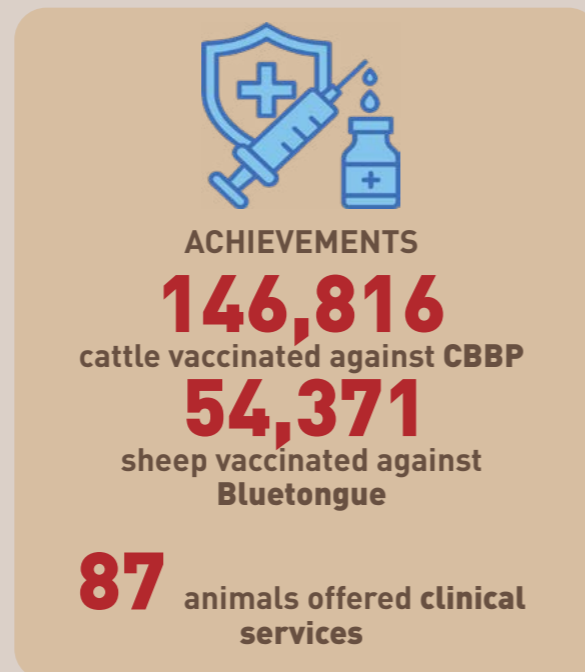
Our primary goal is to boost income derived from livestock while enhancing resilient livestock health and husbandry practices that promote environmental sustainability. It aims to combat the prevalent issues of high livestock mortality and morbidity.

Livestock mass vaccination

Kenya Wildlife Trust's Ufugaji Hifadhi livelihoods program is rooted in the everyday realities of indigenous communities living alongside wildlife-rich landscapes. The program strengthens economic resilience by improving livestock health and promoting sustainable land-use practices that benefit both people and nature.

In March 2025, a major vaccination campaign was conducted across 12 community clusters—**Lemek, Emorijoi, Ilchambai, Emarti, Oloisukut, Aitong, Edoinyo Erinka, Olkurto, Enooronkon, Olesere, Mararianda, and Olare Orok**—targeting **Contagious Bovine Pleuropneumonia (CBPP)** in cattle and **Bluetongue (BT)** in sheep.

These diseases, which often surge during the rainy season, pose significant threats to livestock health and household livelihoods. Through this intervention, **81,065 cattle** and **41,704 sheep** were vaccinated, and **87 animals** received clinical treatment, helping families protect the livestock that form the backbone of their economic and cultural life.



In April, Phase Two of the vaccination campaign successfully reached eight additional clusters—**Impuai, Talek, Sekenani, Nkoilale, Olkarkar, Meguarra, Oloolaimutia, and Nkineji**—where **65,751 cattle** received CBPP vaccinations and **12,667 sheep** were immunized against Bluetongue.

Collectively, these large-scale interventions are enhancing food security, stabilizing household incomes, and reducing vulnerability to disease-related losses. By safeguarding livestock health and supporting sustainable pastoral livelihoods, Ufugaji Hifadhi continues to play a critical role in poverty reduction and in promoting a balanced coexistence between communities, livestock, and the fragile ecosystems of the Mara region.



Vaccination flags off by Hon. Joyce Keshe, Narok County CEC for Livestock and Fisheries.



Rabies vaccination

Rabies is a viral disease that affects the central nervous system of mammals, including humans, and is almost always fatal once symptoms appear. However, it is preventable through vaccination and prompt post-exposure treatment.

Recognizing the devastating impact of past rabies outbreaks—which once severely affected African wild dog populations in the region—the program adopted a One Health approach, acknowledging the interconnected health of communities, domestic animals, and wildlife. This integrated strategy ensured that disease prevention protected not only pets but also human lives, livestock livelihoods, and vulnerable wildlife.

The initiative's primary objectives were to curb rabies transmission through mass vaccination of

domestic dogs and cats, strengthen surveillance and reporting systems, and enhance community awareness of preventive measures. Implemented across **Oloolaimutia, Sekenani, Nkoilale, Aitong, and Talek**, the campaign successfully vaccinated **2,310 cats and dogs**, exceeding its target of 2,000.

Complementary community education activities improved understanding of rabies transmission and prevention, while enhanced data collection and monitoring bolstered early detection and response capacities. Collectively, these efforts are expected to significantly reduce rabies prevalence, decrease human and livestock fatalities, protect vulnerable wildlife populations, and establish a strong foundation for long-term, sustainable rabies control in the Maasai Mara ecosystem.



County veterinary vaccinating dogs at Ingila village





PARTNERSHIPS

KWT believes in having a target-driven and collective approach that will lead to more effective work in Kenya's core ecosystems that is better coordinated and serves the values and economic interests of a wide array of stakeholders, as well as the nation itself.

To achieve this, we strive to develop and strengthen partnerships with grassroots organisations that develop and implement conservation initiatives, government agencies that develop policies, and other conservation authorities who offer varied support.

2025 Lion Footprint Forum *Lion Recovery Fund (LRF)*

The 2025 Lion Footprint Forum gathered leading lion conservation practitioners, researchers, funders, and policy influencers from across Africa and beyond under the theme **"People and Lions: Reducing the Cost and Unlocking the Value of Coexistence."**

Hosted by the Wildlife Conservation Network's Lion Recovery Fund at Elephant Hills Resort, Victoria Falls, the forum ran from 30th June to 4th July 2025 and focused on practical strategies for enhancing human-lion coexistence, sharing best practices, and strengthening collaborative action among conservation stakeholders. Participants engaged in themed sessions addressing coexistence costs, value creation, and collective action to support sustainable lion landscapes.

KWT was represented by Michael Kaelo and Dr. Irene Amoke who played active roles throughout the forum. Michael delivered a featured presentation titled "Increasing the Value: Championing Coexistence through a Lion Ambassadors Initiative," showcasing MPCP's community-driven approach to mitigating conflict and enhancing coexistence through trained Lion Ambassadors and strategic interventions.

He also led one of the focus group discussion sessions, facilitating in-depth discussions on scaling impactful coexistence solutions, aligning investments with landscape needs, and strengthening cross-institutional learning.



©Ronnie Sibanda



©Felix-Studios-Disney-LRF



© Sam Ruby

Elevating Predator Conservation *AirKenya Express*

For KWT and our Mara Predator Conservation Programme (MPCP), protecting apex predators across thousands of square kilometers requires rapid response, constant community engagement, and seamless logistics. Simply put, time spent navigating difficult terrain is time taken away from the frontlines of conservation.

In 2025, AirKenya stepped forward as a logistical partner in our efforts. Recognizing the urgent need for operational efficiency, AirKenya generously facilitated flights to the Maasai Mara for members of our team.

During AirKenya's Open Day in November, KWT engaged with travel agents highlighting how apex predators are important in the Mara's tourism economy.

Conservation is a collaborative ecosystem, and the private sector plays an indispensable role in its success. KWT extends its gratitude to AirKenya Express.



L-R: Gloria Achieng, Jean Uku (Air Kenya) & Dr. Irene Amoke at the AirKenya offices in Wilson Airport.

2nd WRTI Scientific Conference Wildlife Research and Training Institute

In September 2025, the Wildlife Research and Training Institute (WRTI) convened the Second International Wildlife Scientific Conference in Naivasha, Kenya, under the theme **“Innovations in Wildlife Science and Practice for Sustainable Biodiversity Conservation and Socio-economic Development.”**

The conference brought together scientists, wildlife managers, policymakers, and conservation stakeholders from around the world to exchange research findings, practical experiences, and expertise.



The Kenya Wildlife Trust (KWT) team members actively participated through scientific presentations. Assistant Program Scientist Kasaine Sankan presented on his M.Sc. project titled **“Spatiotemporal Habitat Use and Home Range Sizes of Collared Lions (*Panthera leo*) in the Maasai Mara Ecosystem, Kenya,”** and Senior Program Scientist presented on his newly published study, which focused on how camp facilities in the Mara affected lions.

Both presentations reflected ongoing our scientific work, demonstrating how the long-term MPCP dataset continues to inform and advance scientific inquiry.



In recognition of KWT’s continued support and collaboration, the WRTI Board presented the organization with an appreciation award, alongside other key partners.



Empowering the Next Generation I&M Foundation

The Kenya Wildlife Trust believes African conservation’s future should be African-led. To achieve this, we invest strategically in local talent and education. Our 2025 partnership with the I&M Foundation remained vital, supporting our Conservation Leadership Programme (CLP).

The I&M Foundation’s generous financial backing has been pivotal in allowing young Kenyans from the Greater Maasai Mara, Tsavo/ Amboseli, and Samburu/Laikipia ecosystems to pursue higher education. The Foundation is actively removing barriers to entry and shaping Kenya’s next generation of conservation leaders by funding full scholarships for diplomas in Wildlife and Environmental Management at the Wildlife Research and Training Institute (WRTI).

This shared commitment to nurturing talent was highlighted in September 2025, when KWT had the honor of participating in the I&M Foundation’s 5th-anniversary celebrations.

A standout moment of the event was an address by Christopher Saruni, a CLP beneficiary and WRTI graduate. Supported by the I&M Foundation throughout his studies, Christopher stood before attendees to present an original, heartfelt poem titled ‘From looking after the cattle to safeguarding the wildlife’.

His success story transitioning from a passionate student to an educated conservationist highlighted the impact of our collaboration. Christopher exemplifies what is possible when organizations unite to invest in talented, driven young people.



We extend our gratitude to the I&M Foundation for their ongoing partnership and shared vision. Their commitment goes beyond funding; it is an investment in the intellectual capital that will safeguard Kenya’s natural heritage for decades to come.

We look forward to continuing our collective work to empower many more inspiring leaders like Christopher.

Art with Purpose

The 'Slowing Down' Partnership with Venkat Iyer

In July 2025, we were proud to launch a unique creative partnership with veteran photographer Venkat Iyer. This collaboration culminated in the release of his limited-edition coffee table book, **Slowing Down**. More than just a collection of breathtaking imagery, this partnership represents a meeting of minds, where artistic expression directly funds science-based conservation, with proceeds from all book sales supporting KWT and our Mara Predator Conservation Programme (MPCP).

For over twenty years, Venkat Iyer's photography was driven by aesthetics - *the pursuit of light, symmetry, and visual perfection*. However, a journey into the Kenyan wilderness transformed his relationship with his craft. As he reviewed his images of the Maasai Mara, he realized he was instinctively cropping out human elements, leaving only pristine, idealized frames.

In that moment of editing, Venkat recognized the immense, sometimes terrifying power humans hold over the wild. He realized that a delicate and dangerous cocktail of human greed and human need threatened to erase these landscapes forever. This realization gave his photography a new, urgent purpose: wildlife conservation.



Slowing Down Regular Edition

Venkat's search for an organization that mirrored his commitment to long-term, systemic change led him to the Kenya Wildlife Trust. Guided by a shared passion for protecting Kenya's natural heritage, KWT and Venkat formalized their collaboration in 2025. KWT's science-based and community-centric methodology aligned with Venkat's vision.

He was moved by the ecological realities our teams face - such as the vulnerability of cheetah cubs, where our data showed none of the eight cubs monitored in the Greater Mara survived in 2024 - and inspired by our practical, harmonious solutions. Our livestock vaccination drive, which protected over 170,000 livestock in the last year alone, stands as an example of how KWT secures local livelihoods while saving Kenya's predators from retaliatory poisonings.



Slowing Down Limited Collector's Edition

Most wildlife photography books celebrate action, speed, and dramatic hunts. **Slowing Down** is an intentional departure from this convention. Across 128 pages and featuring 63 stunning black-and-white photographs, the book invites readers to do exactly what its title suggests: pause, slow down, and pay close attention to what is truly at stake.

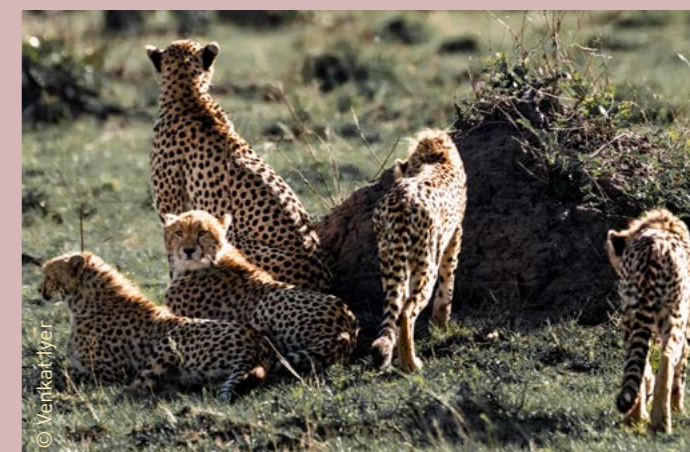
Venkat has captured the scenes of the Mara by stripping away color and focusing on the quiet, unscripted moments - animals resting, lingering, and coexisting in undisturbed peace.

The book is a tribute to the quiet intervals that make the wild whole, urging us to recognize that what we stand to lose is not just the dramatic action of the wild, but its peace.

KWT is honored to partner with an artist who so eloquently translates the soul of the Mara into a call for conservation. Through his lens and the proceeds of this beautiful book, we are stronger, more inspired, and better equipped to preserve the wild for generations to come.



Scan to purchase the book



Amplifying Our Impact

Kasaine Sankan on the 'Boots on the Ground' Podcast

In August 2025, the global reach of KWT's scientific and capacity-building efforts was featured when our Assistant Programme Scientist, Kasaine Sankan, was a guest on the renowned conservation podcast, **Boots on the Ground**.

Kasaine's feature episode provided an international platform to showcase KWT's science-driven approach to predator conservation. Speaking directly from his experiences in the Maasai Mara, he shared the daily realities of gathering field data to track and monitor lion and cheetah populations.

The conversation also highlighted Kasaine's inspiring personal trajectory within the organization serving as a case study for KWT's commitment to mentoring local talent. Listeners tuned in to hear how he transitioned from joining our Mara Predator Conservation Programme (MPCP) as a sponsored undergraduate scholarship intern in 2017 to becoming a leading technical figure in national predator surveys and policy formulation.

Kasaine used the podcast platform to illustrate how homegrown, data-driven science is actively shaping the future of wildlife protection in Kenya by bridging intensive bush fieldwork with his ongoing Master's (MSc) academic research.

National Wildlife Census 2024/2025

Kenya Wildlife Service

The 2nd National Wildlife Census (NWC) 2024/2025, which is implemented by the Wildlife Research and Training Institute (WRTI), Kenya Wildlife Service (KWS), and partners, was launched in June 2024 and concluded in August 2025.

As part of this national survey, the KWT's Mara research team conducted a **90-day lion survey** across the Mara ecosystem in collaboration with the WRTI Mara team, contributing to both planning and field execution.



WRTI Mara team participating in the survey.

The 2024 survey recorded an estimated 465 lions across the Mara ecosystem. These results were incorporated into the national census report, which was officially launched in December 2025 by H.E. President William Ruto, together with the Cabinet Secretary for Tourism and Wildlife, the Principal Secretary for Wildlife, the KWS Director, WRTI CEO, and other dignitaries, partners and public.

We remain committed to strengthening partnerships with government and non-government stakeholders in future annual surveys. Encouragingly, lion populations within the Mara ecosystem continue to show stability, supporting the national estimate of 2,512 lions across Kenya.

Kicheche Cheetah Fundraiser

Kicheche Safari Camps

In October 2025, Kicheche Camps marked their 25th anniversary by launching the **Cheetah Protection Patrol Initiative**, a fundraising effort dedicated to addressing the ongoing decline of cheetahs in the Mara. The initiative aims to raise USD 65,000 to fund a dedicated cheetah monitoring vehicle to be managed by our Mara Predator Conservation Programme (MPCP).

The vehicle will support focused monitoring of cheetah mothers with cubs and the development of targeted interventions to improve cub survival, a key conservation priority. The initiative was launched at a celebration event in Kensington, London, attended by approximately 450 guests from the travel, donor, and conservation communities.



Niels Mogensen and Helen Gibbons during the Kicheche 25th Anniversary.

Kenya Wildlife Trust (KWT) was represented by MPCP staff, who engaged directly with supporters to raise awareness of the Mara cheetah crisis and ongoing conservation efforts. The event concluded with a charity auction, raising approximately half of the target amount.

Kicheche and KWT will continue joint fundraising efforts in 2026, with strong donor interest indicating that the remaining funds are likely to be secured, strengthening long-term cheetah conservation capacity in the Mara.



MPCP's Senior Programme Scientist Niels Mogensen cheering on partnering scientist Brian Schuh passing the race baton to MPCP's Operations and Administrations Officer Betty Cherotich.

Ultramarathon 2025



Very good work being undertaken in predator conservation by a dedicated team.

We are committed to strengthening our partnership to deliver greater impact by integrating our tea conservation range branding with predator conservation work across the Mara

George Mwasaru,
Kericho Gold



On November 15th 2025, the Kenya Wildlife Trust (KWT) proudly fielded a 4-person relay team in the sixth edition of the UltraMARathon, a gruelling 50km race through the northern Maasai Mara. Each member completed a 12.5km leg of the course, moving through the stunning landscapes of the Lemek, Mara North, and Ol Chorro Conservancies. KWT's participation served as a vital platform for our team to connect with other conservationists, rangers, and community members who are equally dedicated to safeguarding the future of the Mara ecosystem.

The funds raised for the team's entrance fees directly supported the incredible organizations that sponsor and organize the race, including the Mara Elephant Project (MEP), Africa Mission Services (AMS), and various wildlife conservancies. These contributions helped MEP train and equip rangers with modern technology for conflict mitigation, supported AMS in providing essential maternal and child healthcare to over 10,000 people, and enhanced ranger operations with new equipment and uniforms. By joining this event, KWT reinforced the collaborative spirit necessary for wildlife conservation, ensuring that both predator populations and the local communities upon which they depend can continue to coexist and thrive.

We are looking forward to participating in the UltraMARathon race again in 2026.

Stakeholder Engagement



Rapid Assessment and Review of Safe System Strategy for Mara Sub Landscape

In March 2025, Kasaine Sankan and Luke Toroitich attended a two-day WWF-led workshop in Narok Town to assess the Safe System Strategy (SAFE) for the Mara Sub-Landscape.

Participants from KWS, MEP, WRTI, and local conservancies reviewed Human–Wildlife Conflict (HWC) trends, noting an increase in reported incidents due to improved monitoring tools, compensation schemes, and field presence, alongside ongoing challenges in data harmonization.

The SAFE approach, adapted from road safety, addresses HWC through six elements: monitoring, mitigation, policy, prevention, response, and understanding conflict. Covering Loita, Mara Conservancies and Reserve, and Transmara, the assessment found progress in monitoring and mitigation but highlighted persistent challenges from rising human pressure and limited response capacity.

Kenya/Tanzania Borderlands Carnivore Coalition

The 2nd Borderland Carnivore Conservation Coalition meeting, held on 7–8 May 2025 in Arusha, convened more than 50 participants from Kenya and Tanzania, including government representatives, conservation organizations, conservancies, and research institutions.

The meeting reviewed progress since the inaugural Namanga forum and focused on strengthening cross-border collaboration for carnivore conservation. Key discussions included validation of transboundary landscape mapping results, linking science to policy, improving data sharing, and learning from successful transfrontier conservation models.



Participants of the Borderland Carnivore Conservation Coalition meeting in Arusha pose for a group photo

Participants also examined stakeholder survey findings and emerging funding landscape trends affecting conservation partnerships.

The workshop defined the coalition’s vision, goals, and priority focus areas for 2025–2026, and established thematic working groups covering habitat connectivity, human–wildlife conflict and coexistence, law enforcement, research and monitoring, and community engagement. A shared coalition goal was adopted to promote resilient carnivore populations supported by inclusive governance, community participation, and coordinated conservation action.

Agreed next steps included forming governance and communication structures, advancing collaborative actions, developing a common strategy, and holding regular follow-up meetings to guide implementation and partnerships.

KWS Carnivore Conference 2025

From 30th to 31st October 2025, KWT participated in the 15th Carnivore Conference, hosted by the Kenya Wildlife Service (KWS) at its Nairobi headquarters. The conference, themed “*Enhancing Carnivore Conservation and Coexistence through Pragmatic Approaches to Human-Carnivore Conflict*,” convened key stakeholders, including the Principal Secretary for the State Department for Wildlife, Ms. Silvia Museiye, alongside conservation partners from across the country.

The forum provided an excellent opportunity for our team to showcase science-based and community-driven approaches used to address human wildlife conflict in the Greater Mara Ecosystem.



Michael Kaelo engaging stakeholders at the conference

We were delighted to host visiting officials at our exhibition stand, where we highlighted the impact of our initiatives, including 'Collars for Conservation'.

This initiative uses real-time tracking data to protect lions and inform communities; the Lion Ambassador Program, demonstrating how field teams bridge the gap between predators and people; and our Community Outreach efforts focused on education and awareness.



Outreach



Leonard Meibuko
Herder, Oloisukut

We interact with wildlife more than most people, just like tourists or guides, but our interactions are not always positive. This training will help us coexist peacefully with wildlife.

I now understand that predator numbers are declining, which also affects my work as a herder. I encourage fellow herders to adopt good herding practices to reduce livestock losses and prevent the killing of predators.



National Recovery and Conservation Action Plan for The Cheetah and Wild Dog in Kenya (2025-2034) Workshop

In March 2025, MPCP participated in a two-day workshop at Machakos University focused on developing the Second Edition of the **National Recovery and Conservation Action Plan for the Cheetah and African Wild Dog in Kenya (2025-2034)**. This updated Action Plan builds on the first strategy (2009–2014) and incorporates lessons from its implementation review.

The plan provides a comprehensive framework for securing the long-term survival of cheetahs and African wild dogs, species classified as Vulnerable and Endangered respectively. It outlines key threats affecting the two carnivores, including habitat loss and fragmentation, human-wildlife conflict, prey depletion, accidental deaths (such as road kills), poorly managed tourism, disease, poaching, illegal trade, genetic erosion, and climate change. Developed through a consultative stakeholder process, the Action Plan is anchored in major national and international conservation frameworks. These include IUCN guidelines, CITES regulations, the Convention on Migratory Species (CMS), and Kenya's Wildlife Conservation and Management Act (WCMA) 2013, which mandates KWS to develop species recovery plans.

The plan aligns with the Regional Conservation Strategy for Eastern Africa and offers updated information on species ecology, population status, distribution, and conservation needs. It is guided by a vision of maintaining viable and ecologically functional populations of cheetahs and wild dogs in Kenya. It outlines six strategic objectives supported by targets, actions, indicators, timelines, and a monitoring and evaluation framework. Successful implementation will require collaboration among key stakeholders, including KWS, WRTI, NGOs, CBOs, research institutions, monitoring programs, local communities, and regional and international partners. Ultimately, the Action Plan aims to foster healthy, connected ecosystems where both species can thrive, while contributing to Kenya's broader biodiversity and sustainable development goals.



Commissioning of Mara Research Centre

On 28th March 2025, it was a pleasure to participate in the commissioning of the Mara Research Centre, led by Wildlife Research & Training Institute (WRTI).

The event was officiated by the Cabinet Secretary for Tourism and Wildlife, Hon. Rebecca Miano, EGH, and accompanied by Sylvia Museiya, CBS, principal secretary of the State Department for Wildlife, Patrick Omondi, CEO, WRTI, and the Narok County Governor, Patrick Ole Ntutu.

Kenya Wildlife Trust's Mara Predator Conservation Programme (MPCP) plays a pivotal role in advancing science-based conservation efforts for predators in the Greater Mara Ecosystem. During the event, we were honoured to present our work, particularly our research on spatial ecology, the technology in conservation that enables us to respond to poisoning incidents and avert human-wildlife conflict before it happens.

The centre marks a momentous step forward in our mission, providing a platform for collaborative research and data-driven solutions to safeguard predators.



L: Hon. Rebecca Miano, EGH, is joined by other government officials in planting a tree to commemorate the day. R: Calvin Naurori, MPCP Research Assistant, engages with Patrick Ole Ntutu & Patrick Omondi (WRTI)



SUSTAINABLE COEXISTENCE WITH LIONS IS ONLY POSSIBLE WHEN EVERYONE TAKES RESPONSIBILITY FOR PROTECTING THEIR LIVESTOCK, BY BUILDING STRONG ENCLOSURES AND PRACTICING PROPER HERDING. COMPENSATION ALONE IS NOT A SUSTAINABLE SOLUTION.

OLOISUKUT RESIDENT



Photography Fundraising Safari

In 2025, we successfully hosted our third photography fundraising safari in collaboration with photographer **Trai Anfield** and MPCP's lead scientist, Niels Mogensen. The safari initially raised USD 10,860, which was subsequently matched by a generous guest contribution of USD 10,000, bringing the total funds raised to USD 20,860.

In addition to the financial support, the safari produced a collection of high-quality predator photographs. Participants have generously donated their best images for use in MPCP newsletters, the annual report, and the long-term identification database. The safari was both a successful fundraising initiative and a valuable awareness-raising platform, and we are grateful to Alila Africa and Alex Walker's Serian for their continued support. Preparations are underway for the next photography safari, scheduled for 2027.

Maasai Mara Researchers and Stakeholders Forum

In December 2025, we attended the Maasai Mara Researchers and Stakeholders Forum at Keekorok Lodge. The forum featured both physical and virtual presentations from different stakeholders.

The forum aimed to share research findings, map ongoing and planned activities within the Maasai Mara ecosystem, identify collaboration opportunities among research institutions, and develop a coordinated research agenda aligned with conservation priorities.

It also sought to strengthen partnerships between researchers, government, and conservation actors, discuss coordination through the One Mara Research Hub, prepare responses for the upcoming Mara-Serengeti Stakeholder Forum in January 2026, and schedule annual meetings for researchers and managers.





© Matthew Williams



KWT TEAM

KWT - KENYA BOARD

Arnolda Shiundu, Chairperson
Moses Kamau, Vice Chairperson
Allan Earnshaw, Chairperson Emeritus
Andreas Fox
Dickson Kaelo
Winnie Wambugu
Mark Boyd
Howard Saunders

KENYA WILDLIFE TRUST UK

Dr Christopher Tuite, Chairperson
Helen Cullen, Secretary
Robin Cullen, Treasurer
Libby Prins

NAIROBI TEAM

Celline Achieng', Executive Director
Gloria Achieng, Finance and Administration Manager
Felixie Kipng'etich, Communications Officer
Gloria Kosgey, Project Assistant

MPCP TEAM

Michael Kaelo, Programme Manager-Mara
Niels Mogensen, Senior Programme Scientist
Kasaine Sankan, Senior Programme Researcher
Betty Cherotich, Operations & Administration Officer
Julius Makibior, Camp & vehicle maintenance Operator
Dominic Sakat, Community Outreach Officer
James Kasaine, Community Liaison Officer
Luke Toroitich, Data Analyst
Billy Kaitet, Monitoring Assistant
Calvin Naurori, Research Assistant
Jacob Soit, Research Assistant
Joshua Soit, Chef & Hub Caretaker

Thanks to **Gloria Achieng for stepping up to serve as our Acting Executive Director during the interim and to **Saitoti Silantoi** (Research Assistant, MPCP) for his dedicated work in 2025; and to **Dr. Irene Amoke** and **Helen Gibbons** for their advisory support and mentorship during our leadership transition.*

*It is our pleasure to welcome **Celline Achieng'**, as the new Executive Director of KWT in March 2026. We look forward to her leadership, strategic vision, and continued support in this new capacity as we advance our mission to conserve Kenya's apex predators.*

© Sam Ruby



HOW TO SUPPORT KWT

ONLINE DONATIONS

You can make a secure online donation via the KWT [website](#).

IN THE USA

Donations from the US are processed by **Empowers Africa**. Empowers Africa is approved as a U.S. public charity, contributions to which are tax-deductible for U.S. federal income tax purposes under Section 501(c)(3) of the U.S. Internal Revenue Code.

Wire Instructions (U.S. dollars sent from domestic or international banks)
Wire transfer where the originating bank is located within or outside of the United States transmitting funds in U.S. Dollars directly to The Northern Trust Company:

Beneficiary Bank: The Northern Trust Company
Beneficiary Bank ABA: 071000152
Beneficiary Account Number: 1171118511
Beneficiary Account Name: Empowers Africa, Inc

Wire transfer where the originating bank is a foreign financial institution transmitting funds in a Foreign Currency to The Northern Trust Company:

Bank Name: The Northern Trust
Company Address: 50 South La Salle, Chicago, Illinois
Swift #: CNORUS44
Account Name: Empowers Africa, Inc.
Account Number: 1171118511

For Donations Made in Stocks

Beneficiary Bank: The Northern Trust Brokerage
DTC Number: 0226
Beneficiary Account Number: NT2-122473
Beneficiary Account Name: Empowers Africa, Inc

**Kindly note – If your bank permits, please add a memo to your wire or stock donation indicating your nonprofit name and indicate whether your donation is to benefit a specific project. Please email Nadia Derelieva at nadia@empowersafrica.org to notify Empowers Africa about your wire transfer or stock donation.*

Donations Sent by Check

Please make your check payable to Empowers Africa and note in the memo your nonprofit name and indicate if your donation is to benefit a specific project. Checks should be mailed to:

Empowers Africa
2 Beekman Place, Ste. 18B
New York, NY 10022

**Kindly note in the memo section of the check that funds are for Kenya Wildlife Trust and indicate a specific programme that you wish to support if applicable.*

IN THE UK

Kenya Wildlife Trust projects are supported in the UK by **Kenya Wildlife Trust UK (KWT-UK)**, a registered charity, in **England and Wales No 1162781**.

KWT-UK use the **JustGiving** platform for donations.
URL: www.kenyawildlifetrustuk.org

There are link buttons on the KWT-UK website to JustGiving where Kicheche guests can donate to the Cheetah Patrol Vehicle Project. There is also a link for donors to give to Kenya Wildlife Trust. Please be sure to choose the correct link for you.

If you wish to donate for a specific project which is not mentioned on the KWT-UK website then please contact KWT-UK by email at FOKWTUK@gmail.com in the first instance. UK taxpayers may be able to claim Gift Aid which is worth a further 25% of your donation to KWT-UK. If you are eligible it costs nothing to add Gift Aid during the JustGiving donation process.

The trustees of KWT-UK are legally obligated to protect the charity's assets and ensure they are not misused for financial crime. They are also responsible for ensuring that the charity's activities comply with UK anti money-laundering regulations. KWT-UK has procedures in place to review donations made and may be in contact with you after you have donated. They would appreciate your co-operation should they need to contact you.

IN KENYA

Donations can also be made by cheque to Kenya Wildlife Trust, P.O. Box 86-00502, Nairobi, Kenya.

DONATING FROM ELSEWHERE

If you would like to donate from elsewhere, please contact us by email at info@kenyawildlifetrust.org for details of our global correspondent banks.

Please email info@kenyawildlifetrust.org afterward, so we can thank you.




OUR INSTITUTIONAL PARTNERS AND SUPPORTERS IN 2025

STRATEGIC DONOR PARTNERS



STRATEGIC WORKING PARTNERS



 KenyaWildlifeTrust
  @kenyawildlifetrust
  @KenyaWildTrust

 info@kenyawildlifetrust.org
  www.kenyawildlifetrust.org