

# Q3 2019 UPDATED LION & CHEETAH FIGURES



## MARA PREDATOR CONSERVATION PROGRAMME



## Lions

### Lion data

We have now completed analysis of our second monitoring survey of 2018 for lions. We can now provide updated lion figures and compare them with the 2017 data.

Table 1 shows estimates for lion density, abundance and sex ratio for lions over the age of one year in the entire study area for 2017 and 2018, while table 2 shows the same parameters in the different management units. The density is given as lions/100km<sup>2</sup> and the sex ratio is female to male. During our survey period, Lemek Conservancy had the highest lion density, while Olderkessi had the lowest. When we start to analyse how the different variables we measure e.g. livestock, prey etc. affect lion density and distribution, we will hopefully be able to give reasons as to why the densities in each management unit differ as they do.

	2017	2018
Lion Density	17.8	<b>18.9</b>
Lion Abundance	464	<b>484</b>
Sex ratio	2.02	1.54

Table 1: Lion abundance, density and sex ratio averaged for the entire study for 2017 vs 2018

Protected area	Abundance		Density	
	2017	2018	2017	2018
Enonkishu	NA	5	NA	15.50
Olare Motorogi	50	35	33.78	23.62
Ol Chorro	11	7	19.14	13.04
Ol Kinyei	10	11	15.21	16.24
Lemek	12	17	19.54	27.52
Mara North	54	52	18.18	17.74
Naboisho	29	39	13.75	18.49
Olarro (North+South)	11	17	12.86	20.48
Olderkessi	4	4	9.22	10.81
Siana	NA	5	NA	13.76
MMNR	200	209	19.02	19.91
Mara Triangle	79	85	16.66	17.82
MMNR + Mara Triangle	279	294	18.29	18.96
All conservancies combined	181	192	18.74	22.72

Table 2: Table 2: Lion abundance and density for the different management units for 2017 vs 2018

For these density figures, we can create a density heat maps for Mara lions, as shown in figure 1 below

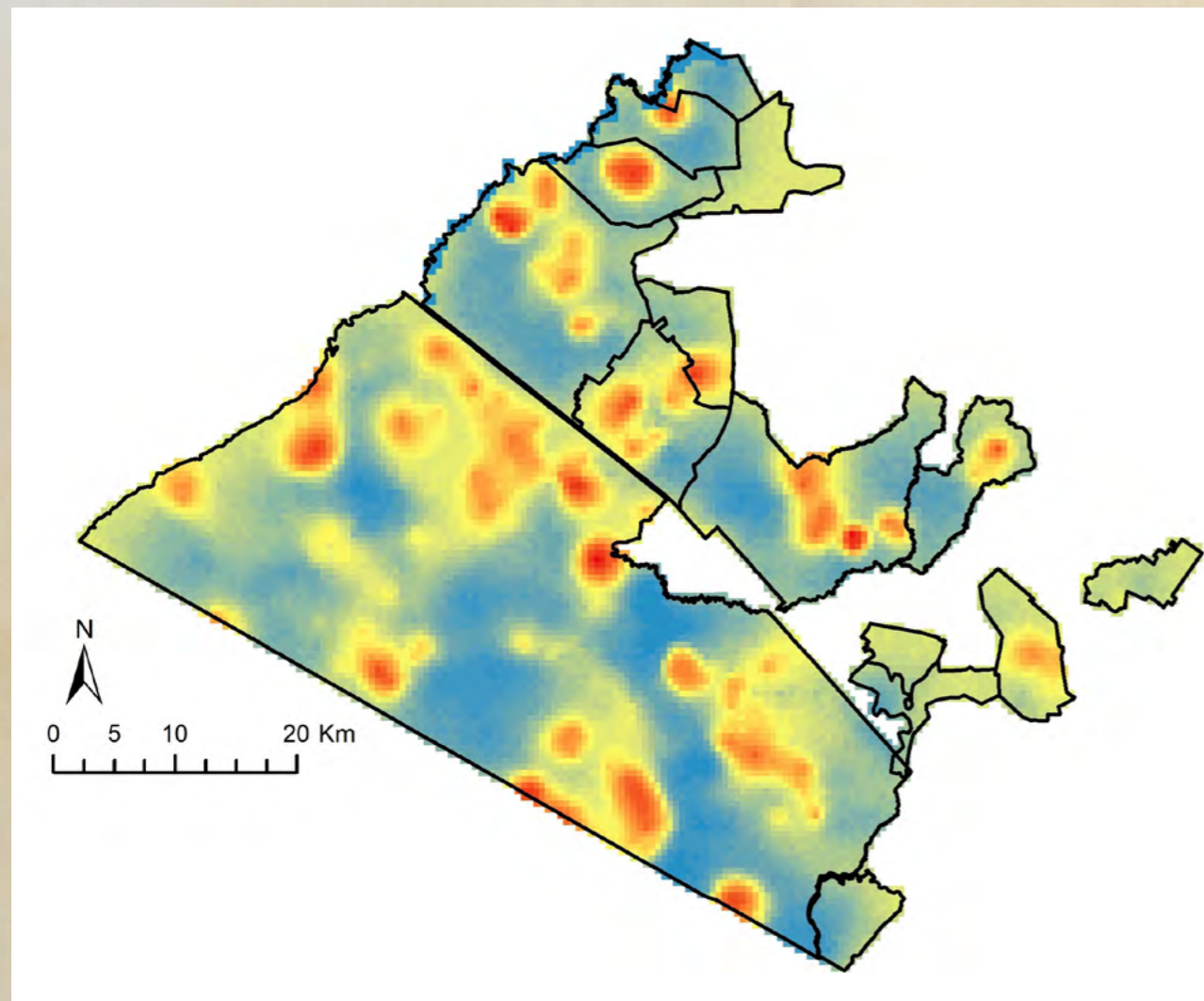


Figure 1: 2018 Lion density map. Red=high density, Blue=low density

The study area expanded in 2018, which partially accounts for its higher abundance estimate than 2017. However, the estimated density of lions between the two study periods is similar. The changes in lion figures the different management areas in from 2017 to 2018 could represent a random fluctuation rather than an actual changes. We need to measure lion populations consistently over long periods of time to explore actual population trends. The 2018 figures should therefore be viewed as an update rather than a population trend.

## Cheetahs

### Cheetah sightings

This quarter we have sighted 37 different individuals in the Reserve and adjoining conservancies, of those sighted 17 were females and 20 were males. The tables below depict areas where they were sighted, sex and number of cubs.

#### Mara National Reserve

GENDER	NAME	NUMBER OF ADULTS	NUMBER OF CUBS
Female	Musiara	1	0
	Nolari	1	0
	Nashipai	1	0
	Neema	1	0
	Anashe	1	0
	Imani	1	0
	Amani	1	3
	Rosetta	1	3
	Sub Total	8	6
Male	5 Musketeers	5	0
	Hodari	1	0
	Daraja Males	2	0
	<b>Sub Total</b>	<b>8</b>	<b>0</b>
<b>Total</b>		<b>16</b>	<b>6</b>

16 different adult cheetahs (8 females and 8 males) and 6 cubs were recorded in the Maasai Mara National Reserve.

## Olare-Motorogi Conservancy

GENDER	NAME	NUMBER OF ADULTS	NUMBER OF CUBS	NOTES
Female	Neema	1	0	
	Selenkei	1	3	
	Sila-Selenkei's daughter	1	0	Dispersing sub adult
	Amani	1	3	
	Imani	1	0	
	<b>Sub Total</b>	<b>5</b>	<b>6</b>	
	Male	5 Musketeers	5	0
Selenkei sons		2	0	Dispersing sub adults
New male		1	0	
<b>Sub Total</b>		<b>8</b>	<b>0</b>	
<b>Total</b>	<b>13</b>	<b>6</b>		

13 different adult cheetahs (5 females and 8 males) and 6 cubs were recorded in Olare-Motorogi Conservancy.

## Mara North/Lemek/Olchoro Conservancies

GENDER	NAME	NUMBER OF ADULTS	NUMBER OF CUBS
Female	Amani	1	3
	Kisaru	1	6
	Neema	1	0
	<b>Sub Total</b>	<b>3</b>	<b>9</b>
Male	Kiraposhe sons	2	0
	<b>Sub Total</b>	<b>2</b>	<b>0</b>
<b>Total</b>	<b>5</b>	<b>9</b>	

5 different adult cheetahs (3 females and 2 males) and 9 cubs were recorded in Mara North Conservancy.

## Mara Triangle

GENDER	NAME	NUMBER OF ADULTS	NUMBER OF CUBS	NOTES
Female	Kisiri's daughter	1	0	Dispersing sub adult
	<b>Sub Total</b>	<b>1</b>	<b>0</b>	
Male	Lemai Males	2	0	
	Kisiri's male cub	1	4	Dispersing sub adult
<b>Sub Total</b>	<b>3</b>			
<b>Total</b>	<b>4</b>			

2 different adult cheetahs (2 males) and 2 sub adults were recorded in Mara Triangle Conservancy.

## Naboisho Conservancy

GENDER	NAME	NUMBER OF ADULTS	NUMBER OF CUBS	NOTES
Female	Selenkei	1	3	
	Entito	1	0	
	Nabulu	1	0	
	Entito female cub	1	0	Dispersing sub adult
	<b>Sub Total</b>	<b>4</b>	<b>3</b>	
Male	Olkinyei Males	2	0	
	Entito males	2	0	Dispersing sub adults
	<b>Sub Total</b>	<b>4</b>	<b>0</b>	
	<b>Total</b>	<b>8</b>	<b>3</b>	

1 adult cheetah (1 female) and 4 cubs were recorded in Olkinyei Conservancy.

## Olkinyei Conservancy

GENDER	NAME	NUMBER OF ADULTS	NUMBER OF CUBS
Female	Nebaati	1	4
	<b>Sub Total</b>	<b>1</b>	<b>4</b>
	<b>Total</b>	<b>1</b>	<b>4</b>

1 adult cheetah (1 female) and 4 cubs were recorded in Olkinyei Conservancy.

## Olarro North Conservancy

GENDER	NAME	NUMBER OF ADULTS	NUMBER OF CUBS
Female	Haribika	1	0
	<b>Sub Total</b>	<b>1</b>	<b>0</b>
	<b>Total</b>	<b>1</b>	<b>0</b>

1 adult cheetah (1 female) and 4 cubs were recorded in Olarro North Conservancy.



**Mara Predator Conservation Programme**  
info@marapredatorconservation.org | www.marapredatorconservation.org

 @MaraPredator  @marapredatorconservation  MaraPredatorConservation